

# INSEME



*April*

2023





# HOW TO READ PROOFS

TPI Total Performance Index	NM\$ Net Merit Dollars	CM\$ Cheese Merit Dollars	GM\$ Grazing Merit Dollars	FM\$ Fluid Merit Dollars
46% Production traits	<b>43% Production traits</b>	50% Production traits	38% Production traits	45% Production traits
28% Health traits	<b>41% Health traits</b>	37% Health traits	48% Health traits	39% Health traits
26% Type traits	<b>16% Type traits</b>	13% Type traits	14% Type traits	16% Type traits

- PTA** = Predicted Transmitting Ability PTA is the predicted difference between a parent animal's offspring and the average, due to the genes transmitted from the parent. Each PTA is given in the units used to measure the trait. The PTA for milk is reported in pounds, the PTA for productive life is reported in months.
- PTAM** = Predicted Transmitting Ability Milk production in pounds, reflecting the expected milk production of future mature daughters.
- PTAF** = Predicted Transmitting Ability Fat pounds, reflecting the expected butterfat production of mature daughters
- PTAF%** = Predicted Transmitting Ability Fat %, indicates the bull's genetic variance for transmitting fat and being positive or negative.
- PTAP** = Predicted Transmitting Ability Protein production in pounds reflecting the expected protein production of mature daughters.
- PTAP%** = Predicted Transmitting Ability Protein %, indicates the bull's genetic variance for transmitting protein and being positive or negative.
- PL** = Productive Life, gives a measure of the number of productive months, lifetime you can expect from a bull's daughters
- LIV** = Cow Liveability, measure of a cow's ability to remain alive while in the milking herd.
- SCS** = Somatic Cell Score, is used to improve mastitis resistance. Bulls with low a PTA for SCS (less than 3.00) are expected to have daughters with lower mastitis than bulls with high PTA for SCS (greater than 3.50)
- DPR** = Daughter Pregnancy Rate, is defined as the percentage of cows that become pregnant during each 21 day period. A DPR of '1.0' implies that daughters from this bull are 1% more likely to become pregnant during that estrus cycle than a bull with an evaluation of zero. Each increase of 1% in PTA DPR equals a decrease of 4 days in PTA days open
- HCR** = Heifer Conception Rate, a virgin heifers ability to conceive. Defined as a percentage of inseminated heifers that become pregnant each service. A HCR of 1.0 implies that daughters of this bull are 1% more likely to become pregnant as a heifer than daughters of a bull with an evaluation of 0.0

- CCR** = Cow Conception Rate, a lactating cows ability to conceive. Defined as a percentage of inseminated cows that become pregnant each service. A HCR of 1.0 implies that daughters of this bull are 1% more likely to become pregnant as a cow than daughters of a bull with an evaluation of 0.0.
- BCS** = Body Condition Score, reflects the animal's energy balance status in which research has clearly shown an association with improved female fertility, longevity and disease resistance.
- SCE** = Sire Calving Ease, the percentage of calving difficulties in first lactation animals. The average percentage difficult births is approximately 2.2%. in general, bulls with a SCE of 2.2% or less are considered "calving ease" bulls that are fine to use on heifers and smaller cows.
- DCE** = Daughter Calving Ease, like SCE, DCE is a measurement of the tendency of calves from a particular animal to be born easy (average 2.3%). Daughters of bulls with high DCE numbers would be expected to have a more difficult time giving birth than daughters of bulls with lower DCE numbers. DCE is evaluated on the same scale as SCE.
- SSB** = Sire Stillbirth, the percentage of a bull's offspring that are born dead to first lactation animals.
- DSB** = Daughter Stillbirth, is expressed as a percent stillbirth, where stillborn calves are those scored as dead at birth or born alive but died within 48 hours of birth. The average is 5.3%
- FE** = Feed Efficiency, is the net profit a farmer receives from an increase in production  $FE = (\$0.0008 \times PTAM) + (\$1.55 \times PTAF) + (\$1.73 \times PTAP) + (\$0.11 \times \text{Feed Saved})$
- FI** = Fertility Index, combines several reproductive components ( DPR, CCR, HCR and Early First Calving) in to one overall index.  $FI = (0.7 \times DPR) + (0.1 \times HCR) + (0.1 \times CCR) + (0.1 \times EFC)$
- PTAT** = Predicted Transmitting Ability for Type, is an estimate of the genetic superiority for conformation that bull will transmit to its offspring. This is directly correlated with the final score of the bull's daughters, not the linear traits.
- UDC** = Udder Composite Index, is an index based on ability for udder improvement. Udder composite includes six linear traits and the weighting for each trait's contribution to higher udder scores.
- FLC** = Foot and Leg Composite Index, is a measure of a bull's ability for foot and leg improvement.

Name	Father	Maternal grandfather	GPFT	IES €	ICS-PR €	Kg Lt	% Gr	Kg Gr	% Pr	Kg Pr	SCS	PL	DPR	SCE	Type	Icm	A & P
KING RED P	GIO P-RF	GYWER	4822	1333	1308	1220	0,10	57	0,19	64	108	118	114	103	1,33	2,09	3,41
AVON	KONRAD	WORLD CLASS	4741	1175	1238	1188	0,30	80	0,17	62	108	114	114	102	0,87	1,97	0,19
ARES	CRISALIS RF	PADAWAN	4703	1146	1247	1519	-0,01	58	0,25	80	111	113	110	101	0,57	1,50	-0,38
GTA	MACHONE	SOUNDCLOUD	4692	1029	1137	1504	0,13	68	0,22	76	114	111	105	102	2,02	2,10	2,14
BRABUS	WHEELHOUSE	GUARANTEE	4665	1199	1321	1019	0,41	83	0,22	61	110	118	109	102	1,29	2,19	0,68
GRIFONE	MACHONE	SOUNDCLOUD	4629	1055	1185	828	0,09	39	0,28	61	116	115	108	101	2,20	2,53	2,54
FESTUS	ZAZZLE	CASPER	4609	1208	1349	857	0,34	74	0,17	51	106	119	114	103	0,70	1,48	0,87
VALE-T	TREATY	PANAMA	4605	983	1061	915	0,27	64	0,24	58	112	113	108	100	1,62	2,95	1,30
SALUZZO	PLINKO	DATLINE	4597	1108	1140	1200	0,38	90	0,33	80	111	109	105	104	0,43	0,51	1,37
MANTRA	TRY ME	YODA	4580	963	928	1044	0,45	87	0,33	74	106	112	102	102	1,77	2,85	0,61
FABIUS	ZAZZLE	LAWSON	4576	1055	1171	1027	0,68	111	0,31	72	109	111	107	101	0,53	1,22	-1,77
SUVAN	CAPTAIN	CHARL	4576	1221	1098	1117	0,72	122	0,22	62	109	116	110	101	-0,05	0,90	-0,58
SUEPRFAST	MOTIVATED	TOPNOTCH	4549	906	846	1166	0,34	84	0,31	76	107	106	105	100	1,48	1,91	0,91
OGLETHORPE	PLINKO	HOTSPOT	4516	1027	1036	997	0,36	80	0,34	75	107	108	106	102	0,60	1,15	1,92
BLANCO	EINSTEIN	CASPER	4515	955	874	1158	0,44	95	0,20	65	111	111	103	101	1,82	2,86	0,73
DISTEFANO	HOTHAND	TOOHOT	4492	972	893	1370	0,34	85	0,20	67	109	113	103	104	1,56	2,89	0,59
MINARDI	DATLINE	SUPERSTAR	4478	880	1064	1071	0,22	63	0,20	62	113	109	107	103	1,56	1,88	1,02
PASOLINI	PADAWAN	GYMNAST	4475	894	981	1710	-0,26	32	0,19	82	105	104	110	101	1,49	1,34	1,95
KYRIOS FR	STRADIVARI	SPARK RED	4472	1002	1279	1372	-0,24	23	0,05	54	114	115	111	102	1,51	2,41	2,08
SONIK	MACHONE	SOUND SYSTEM	4468	948	857	1189	0,37	83	0,23	71	105	111	105	100	1,94	2,62	0,61
SEIKO	MACHONE	CASPER	4460	910	974	1726	-0,02	62	0,22	89	110	108	101	101	1,71	1,55	0,34
STRATOS	PANAMA	PADAWAN	4456	1064	916	1373	-0,06	46	0,19	70	105	115	108	102	1,28	2,22	1,94
ELETTRIO	GIORDANO	FLAGSHIP	4438	981	1113	409	0,57	82	0,29	47	111	112	110	100	1,22	2,18	0,27
CARTIER	CAPTAIN	KENNEDY	4416	1212	1176	995	0,47	86	0,22	61	104	115	113	102	-0,02	0,47	0,27
ERIK P	HEART	HOTSPOT	4413	973	945	522	0,43	70	0,31	55	106	111	110	100	1,21	1,73	1,59

USDA 04/2023

## PFT Production Functionality Type

INDEX FOR THE ITALIAN HOLSTEIN BREED

**PFT is the OFFICIAL ITALIAN SELECTION INDEX FOR THE ITALIAN HOLSTEIN BREED**

and it is made of three elements:

**Production, Functionality and Type.**

It was last updated December 2019 moving part of the weight given to production and Type to Functionality.

It is published on a point scale and as an Estimated Breeding Value (EBV) i.e. the genetic **value of the bull itself**.



**PRODUCTION**  
47%

Fat (Kg) 8%

Protein (Kg) 33%

Pct-fat (%) 3%

Pct-protein (%) 3%

**FUNCTIONALITY**  
36%

Functional longevity 5%

Somatic cell count 5%

Daughter fertility 20%

Mastitis 6%

**TYPE**  
17%

Overall Type 4%

Udder composite (ICM) 9%

Feet&Legs composite (IAP) 4%



# KBB TOP 10



Naab Code	Name	Legend	Sire	Mgs	A2A2	KBB	Gpft	Gtpi	NM\$	Milk (lbs)	Fat (lbs)	Fat %	Pr (lbs)	Pr %	SCS	PL	DPR	SCE	PTAT	UDC	FLC
643H005168	Crocodile-St	Legend	Captain	Charl	A2A2	BB	4395	3010	1046	1163	100	0,19	52	0,05	2,65	6,5	0,9	1,5	0,99	1,31	0,65
543H000294	Fabius		Altazazle	Altalawson		BB	4576	2915	907	625	94	0,24	47	0,10	2,65	5,0	-0,2	2,0	1,30	1,51	0,35
643H005158	Oglethorpe-St		Altaplinko	Hotspot P		BB	4516	2793	796	742	70	0,14	54	0,11	2,77	4,8	0,0	2,0	0,87	1,21	0,78
543H06436	Zelda P		Star P RF	Altastarjack		BB	4102	2792	835	1028	61	0,07	50	0,06	2,74	5,0	1,4	1,4	0,91	1,08	1,24
543H000291	Mantra		Try Me	Yoda		BB	4580	2790	808	975	65	0,09	58	0,10	2,78	5,1	-1,9	2,6	1,96	1,72	0,47
543H000279	Portofino		Kudos	Cany		BB	4239	2757	577	1386	57	0,01	61	0,06	2,85	1,7	-1,4	2,2	2,39	2,45	0,41
543H000304	Ludwig		Capone	Bramante	A2A2	BB	4372	2752	774	1344	61	0,03	63	0,07	2,72	4,6	-1,4	1,8	1,04	0,70	0,82
543H000261	Eletro		Giordano	Flagship		BB	4438	2746	689	29	70	0,25	33	0,11	2,60	4,3	2,0	2,1	0,86	1,72	-0,33
543H000295	Tialoco		Machone	Redrock		BB	4406	2719	692	1073	27	-0,05	41	0,03	2,51	6,0	1,9	1,6	1,64	2,02	-0,03
543H000163	Liver		Superhero	Missouri	A2A2	BB	4310	2651	644	1442	42	-0,05	47	0,01	2,64	3,4	1,8	2,2	0,79	1,20	-0,17
543H000282	Wally Red P		Solitary P	Abi Red	A2A2	BB	3832	2646	698	913	69	0,12	45	0,06	3,02	3,3	-2,0	1,6	1,13	1,30	0,88

USDA 04/2023

# A2A2 TOP 10



Naab Code	Name	Legend	Sire	Mgs	A2A2	KBB	GPFT	TPI	Net Merit	Milk (lbs)	Fat (lbs)	Fat %	Pr (lbs)	Pr %	SCS	PL	DPR	SCE	PTAT	UDC	FLC
643H005160	Dg Suvan	Legend	Captain	Charl	A2A2		4576	3098	1179	1444	119	0,22	58	0,04	2,79	6	1,9	2,1	0,69	1,01	0,65
643H005159	Dg Boppe	Legend	Captain	Charl	A2A2		4036	3075	1146	2060	125	0,15	76	0,04	2,97	3,9	-1,1	1,5	1,36	1,17	0,71
643H005169	Cartier-St	Legend	Captain	Kennedy	A2A2		4416	3022	1107	1170	98	0,18	59	0,08	2,9	6,3	2,1	1,5	0,54	1	0,38
643H005172	Norman	Legend	Captain	Topstone	A2A2		4212	3010	1099	1652	117	0,18	63	0,04	2,85	4,6	-0,2	1,4	0,35	1,44	0,32
643H005168	Crocodile-St	Legend	Captain	Charl	A2A2	BB	4395	3010	1046	1163	100	0,19	52	0,05	2,65	6,5	0,9	1,5	0,99	1,31	0,65
543H000310	Brabus		Wheelhouse	Guarantee	A2A2		4665	2913	953	1139	81	0,13	54	0,06	2,7	5,7	-0,4	1,8	1,39	1,77	0,27
543H000296	Makumba		Altaplinko	Derek	A2A2		4383	2814	819	1136	92	0,17	56	0,07	2,79	3,6	-0,7	1,7	0,88	0,88	0,14
543H000286	Avon		Konrad	World Class	A2A2		4741	2797	800	804	74	0,15	42	0,06	2,75	4,9	0,6	2,0	0,78	1,55	-0,13
543H000252	Distefano		Altahotand	Altatohot	A2A2		4492	2796	720	1002	71	0,11	53	0,08	2,68	3,3	-1,2	1,8	1,74	2,04	0,11
543H000300	Saluzzo		Altaplinko	Altadateline	A2A2		4597	2779	850	1263	75	0,09	62	0,08	2,55	4,4	-0,2	1,5	0,17	0,36	-0,47

USDA 04/2023

# Milk TOP 10



Naab Code	Name	Legend	Sire	Mgs	A2A2	KBB	GPFT	TPI	Net Merit	Milk (lbs)	Fat (lbs)	Fat %	Pr (lbs)	Pr %	SCS	PL	DPR	SCE	PTAT	UDC	FLC
643H005159	Dg Boppe	Legend	Captain	Charl	A2A2		4036	3075	1146	2060	125	0,15	76	0,04	2,97	3,9	-1,1	1,5	1,36	1,17	0,71
543H000152	Moondance		Altahotrod	Mccutchen	A2A2		3301	2376	303	1947	30	-0,15	49	-0,04	3,18	0,1	-2,4	2,2	1,58	1,22	0,13
543H000208	Rubesco		Imax	Jedi	A2A2		3703	2676	653	1870	63	-0,03	67	0,03	3,02	2,5	-3,0	1,9	1,48	1,66	0,14
543H000221	Emerito		Altamontoya	Jedi			4259	2627	652	1809	53	-0,06	67	0,04	2,82	3,5	-2,1	2,4	1,25	0,92	-0,70
543H000270	Berton		Boulevard	Sound System			4187	2623	574	1782	52	-0,06	53	-0,01	2,71	2,7	-1,7	2,7	1,69	1,37	0,26
543H000167	Neutron		Charley	Powerball-P	A2A2	BB	4211	2529	491	1724	22	-0,15	58	0,01	2,82	2,1	0,5	1,8	1,10	0,89	0,21
643H005172	Norman	Legend	Captain	Topstone	A2A2		4212	3010	1099	1652	117	0,18	63	0,04	2,85	4,6	-0,2	1,4	0,35	1,44	0,32
543H000247	Carlomagno		Bramante	Tabasco			4400	2687	670	1609	58	-0,01	70	0,07	2,84	3,5	-1,4	2,6	1,30	0,58	-0,24
543H000265	Brunelleschi		Altadateline	Sound System	A2A2		4080	2623	536	1549	62	0,01	54	0,02	2,80	0,5	-1,9	2,2	1,84	2,07	-0,54
543H000305	Lilium		Machone	Nebula			4227	2793	737	1464	58	0,01	62	0,06	2,63	4,1	-0,7	2,1	1,26	1,76	0,30

USDA 04/2023

# GTPI TOP 10



Naab Code	Name	Legend	A2A2	KBB	Sire	Mgs	GPFT	TPI	Net Merit	Milk (lbs)	Fat (lbs)	Fat %	Pr (lbs)	Pr%	SCS	PL	DPR	SCE	PTAT	UDC	FLC
643H005160	Dg Suvan	Legend	A2A2		Captain	Charl	4576	3098	1179	1444	119	0,22	58	0,04	2,79	6	1,9	2,1	0,69	1,01	0,65
643H005159	Dg Boppe	Legend	A2A2		Captain	Charl	4036	3075	1146	2060	125	0,15	76	0,04	2,97	3,9	-1,1	1,5	1,36	1,17	0,71
643H005169	Cartier-St	Legend	A2A2		Captain	Kennedy	4416	3022	1107	1170	98	0,18	59	0,08	2,9	6,3	2,1	1,5	0,54	1	0,38
643H005172	Norman	Legend	A2A2		Captain	Topstone	4212	3010	1099	1652	117	0,18	63	0,04	2,85	4,6	-0,2	1,4	0,35	1,44	0,32
643H005168	Crocodile-St	Legend	A2A2	BB	Captain	Charl	4395	3010	1046	1163	100	0,19	52	0,05	2,65	6,5	0,9	1,5	0,99	1,31	0,65
543H000294	Fabius			BB	Altazazzle	Altalawson	4576	2915	907	625	94	0,24	47	0,10	2,65	5,0	-0,2	2,0	1,30	1,51	0,35
543H000310	Brabus		A2A2		Wheelhouse	Guarantee	4665	2913	953	1139	81	0,13	54	0,06	2,7	5,7	-0,4	1,8	1,39	1,77	0,27
543H000299	Wodoo				Altazazzle	Achiever	4114	2836	882	1171	110	0,22	47	0,04	2,88	2,4	-2,4	1,9	1,49	1,59	-0,05
543H000296	Makumba		A2A2		Altaplanko	Derek	4383	2814	819	1136	92	0,17	56	0,07	2,79	3,6	-0,7	1,7	0,88	0,88	0,14
543H000303	Erik P				Heart	Hotspot P	4413	2806	685	966	80	0,15	56	0,09	2,81	2,5	0,7	2,7	1,36	1,09	0,34
543H000309	Grifone				Machone	Soundcloud	4629	2800	625	792	51	0,07	48	0,08	2,49	4,4	0,9	2,6	2,26	2,02	9,57
543H000286	Avon		A2A2		Konrad	World Class	4741	2797	800	804	74	0,15	42	0,06	2,75	4,9	0,6	2,0	0,78	1,55	-0,13
543H000252	Distefano		A2A2		Altahothand	Altatoohot	4492	2796	720	1002	71	0,11	53	0,08	2,68	3,3	-1,2	1,8	1,74	2,04	0,11
643H005158	Oglethorpe-St			BB	Altaplanko	Hotspot P	4516	2793	796	742	70	0,14	54	0,11	2,77	4,8	0,0	2,0	0,87	1,21	0,78
543H000305	Lilium				Machone	Nebula	4227	2793	737	1464	58	0,01	62	0,06	2,63	4,1	-0,7	2,1	1,26	1,76	0,30
543H06436	Zelda P			BB	Star P RF	Altastarjack	4102	2792	835	1028	61	0,07	50	0,06	2,74	5,0	1,4	1,4	0,91	1,08	1,24
543H000291	Mantra			BB	TRy Me	Yoda	4580	2790	808	975	65	0,09	58	0,10	2,78	5,1	-1,9	2,6	1,96	1,72	0,47
543H000290	Blanco				Einstein	Cany	4515	2788	670	1011	87	0,17	52	0,07	2,69	2,1	-1,7	2,5	2,04	2,22	0,00
543H000300	Saluzzo		A2A2		Altaplanko	Altadateline	4597	2779	850	1263	75	0,09	62	0,08	2,55	4,4	-0,2	1,5	0,17	0,36	-0,47
543H000308	Gta				Machone	Soundcloud	4692	2772	696	1041	62	0,08	52	0,07	2,56	3,3	-0,6	2,2	1,81	1,53	0,31
543H000287	Superfast				Motivated	Topnotch	4549	2768	753	1306	72	0,07	66	0,09	2,79	3,6	-0,9	2,2	1,34	0,92	-0,25
543H000279	Portofino			BB	Kudos	Cany	4239	2757	577	1386	57	0,01	61	0,06	2,85	1,7	-1,4	2,2	2,39	2,45	0,41
543H000304	Ludwig		A2A2	BB	Capone	Bramante	4372	2752	774	1344	61	0,03	63	0,07	2,72	4,6	-1,4	1,8	1,04	0,70	0,82
543H000261	Elettro			BB	Giordano	Flagship	4438	2746	689	29	70	0,25	33	0,11	2,60	4,3	2,0	2,1	0,86	1,72	-0,33
543H000292	King Red P		A2A2		Gio P	Gywer Rdc	4822	2730	696	935	50	0,05	45	0,06	2,72	4,5	1,4	1,3	0,99	1,25	1,41

USDA 04/2023

# NM\$ TOP 10



Naab Code	Name	Legend	Sire	Mgs	A2A2	KBB	GPFT	TPI	Net Merit	Milk (lbs)	Fat (lbs)	Fat %	Pr (lbs)	Pr %	SCS	PL	DPR	SCE	PTAT	UDC	FLC
643H005160	Dg Suvan	Legend	Captain	Charl	A2A2		4576	3098	1179	1444	119	0,22	58	0,04	2,79	6	1,9	2,1	0,69	1,01	0,65
643H005159	Dg Boppe	Legend	Captain	Charl	A2A2		4036	3075	1146	2060	125	0,15	76	0,04	2,97	3,9	-1,1	1,5	1,36	1,17	0,71
643H005169	Cartier-St	Legend	Captain	Kennedy	A2A2		4416	3022	1107	1170	98	0,18	59	0,08	2,9	6,3	2,1	1,5	0,54	1	0,38
643H005172	Norman	Legend	Captain	Topstone	A2A2		4212	3010	1099	1652	117	0,18	63	0,04	2,85	4,6	-0,2	1,4	0,35	1,44	0,32
643H005168	Crocodile-St	Legend	Captain	Charl	A2A2	BB	4395	3010	1046	1163	100	0,19	52	0,05	2,65	6,5	0,9	1,5	0,99	1,31	0,65
543H000310	Brabus		Wheelhouse	Guarantee	A2A2		4665	2913	953	1139	81	0,13	54	0,06	2,7	5,7	-0,4	1,8	1,39	1,77	0,27
543H000294	Fabius		Altazazzle	Altalawson		BB	4576	2915	907	625	94	0,24	47	0,10	2,65	5,0	-0,2	2,0	1,30	1,51	0,35
543H000299	Wodoo		Altazazzle	Achiever			4114	2836	882	1171	110	0,22	47	0,04	2,88	2,4	-2,4	1,9	1,49	1,59	-0,05
543H000300	Saluzzo		Altaplanko	Altadateline	A2A2		4597	2779	850	1263	75	0,09	62	0,08	2,55	4,4	-0,2	1,5	0,17	0,36	-0,47
543H06436	Zelda P		Star P RF	Altastarjack		BB	4102	2792	835	1028	61	0,07	50	0,06	2,74	5,0	1,4	1,4	0,91	1,08	1,24

USDA 04/2023



SERRA FARM  
ARETINO

# ARETINO

IT001991144894 - 543HO00218



Serra Farm Aretino

**PADAWAN**

Jedi x Enforcer

**SUPERSHOT**

Serra Farm Aryel ET  
VG85

**TANGO UNO**

Serra Farm Tango  
Vera VG88

**TPI**  
**+2435**

**NET MERIT \$**  
**+387**

**CHEESE MERIT \$**  
**+395**

► **PRODUCTION TRAITS (81% REL)**

Milk	% Fat	Fat	% Protein	Protein
<b>+1307 lbs</b>	<b>-0,1</b>	<b>+21</b>	<b>+0,01</b>	<b>+44</b>
K Casein <b>AB</b>		Beta Lactoglobuline <b>AA</b>		Beta Casein <b>A2A2</b>

► **HEALTH TRAITS**

SCS	<b>+2,72</b>	SCE	<b>+2,30</b>
PL	<b>+3,20</b>	DCE	<b>+2,30</b>
DPR	<b>+1,10</b>	FI	<b>+1,20</b>



Rimbosio Supershot



► **TYPE TRAITS**

PTAT **+0,65** UDC **+0,61** FLC **-0,55**

Stature	>	1,59
Stenght	>	1,54
Body Dept		0,75
Dairy Form		0,07
Rump Angle		0,62
Thurl Width	>	1,52
Rear Legs-Side		-2,36
Rear Legs-Rear		0,03
Foot Angle		1,03
Feet & Legs Score		-0,18
F. Udder Attachment		1,09
Rear Udder Height		0,74
Rear Udder Width		1,02
Udder Cleft		0,68
Udder Depth		1,10
Front Teat Placement		0,45
Rear Teat P. Rear		0,65
Teat Length		-0,39

PALASSOTTO  
INSEME

# AVON

IT004992215987 - 543HO00286 - aAa 423

SEXED SEMEN *Made in Italy*  
**FOEMINA**  
Sexed **ULTRA 4M**



Palassotto Inseme Avon

**KONRAD**

Hotjob x Jedi

**WORLD CLASS**

CO-OP Yola 9168

**FRAZZLED**

CO-OP Frazzled  
8114 8561

**TPI**  
**+2797**

**NET MERIT \$**  
**+800**

**CHEESE MERIT \$**  
**+815**

► **PRODUCTION TRAITS (79% REL)**

Milk	% Fat	Fat	% Protein	Protein
<b>+804 lbs</b>	<b>+0,15</b>	<b>+74</b>	<b>+0,06</b>	<b>+42</b>
K Casein <b>AA</b>		Beta Lactoglobuline <b>AA</b>		Beta Casein <b>A2A2</b>

► **HEALTH TRAITS**

SCS	<b>+2,75</b>	SCE	<b>+2,00</b>
PL	<b>+4,90</b>	DCE	<b>+1,80</b>
DPR	<b>+0,60</b>	FI	<b>+1,30</b>

► **TYPE TRAITS**

PTAT **+0,78** UDC **+1,55** FLC **-0,13**

Stature		0,40
Stenght		0,16
Body Dept		-0,37
Dairy Form		-0,70
Rump Angle		-0,60
Thurl Width		0,03
Rear Legs-Side		-1,13
Rear Legs-Rear		-0,11
Foot Angle		0,78
Feet & Legs Score		-0,03
F. Udder Attachment	>	2,41
Rear Udder Height		1,45
Rear Udder Width		0,99
Udder Cleft		0,39
Udder Depth	>	2,48
Front Teat Placement		0,54
Rear Teat P. Rear		0,53
Teat Length		-1,17



GO-FARM

# BELLAGIO

IT019991728989 - 543HO00191 - aAa 432516



**IMAX** × **HOTROD** × **MCCUTCHEM**  
 Spring x Mogul × Go-Farm-Bomba MB85 × Go-Farm Brashine EX91

**TPI**  
+2713

**NET MERIT \$**  
+665

**CHEESE MERIT \$**  
+674

## ► PRODUCTION TRAITS (82% REL)

Milk	% Fat	Fat	% Protein	Protein
<b>+991 lbs</b>	<b>+0,1</b>	<b>+68</b>	<b>+0,05</b>	<b>+44</b>
K Casein <b>AA</b>		Beta Lactoglobuline <b>BB</b>		Beta Casein <b>A2A2</b>

## ► HEALTH TRAITS

SCS	<b>+2,98</b>	SCE	<b>+2,10</b>
PL	<b>+3,20</b>	DCE	<b>+2,00</b>
DPR	<b>-1,40</b>	FI	<b>-0,50</b>

## ► TYPE TRAITS

PTAT **+1,75** UDC **+1,97** FLC **+0,75**

Stature	>	2,31
Stenght	>	1,08
Body Dept	>	0,92
Dairy Form	>	0,78
Rump Angle	>	0,81
Thurl Width	>	1,95
Rear Legs-Side	>	0,35
Rear Legs-Rear	>	1,50
Foot Angle	>	1,21
Feet & Legs Score	>	1,09
F. Udder Attachment	>	2,81
Rear Udder Height	>	2,46
Rear Udder Width	>	2,17
Udder Cleft	>	1,54
Udder Depth	>	2,95
Front Teat Placement	>	1,84
Rear Teat P. Rear	>	1,83
Teat Lenght	>	-1,62

CRISTELLA  
INSEME

# BERTON

IT019991987840 - 543HO00270 - aAa 234

SEXED SEMEN *Made in Italy*  
**FOEMINA**  
 Sexed **ULTRA 4M**



**BOULEVARD** × **SOUND SYSTEM** × **JEDI**  
 Router x Afterburner × Cristella MB85 × Cristella Mamey B79

**TPI**  
+2623

**NET MERIT \$**  
+574

**CHEESE MERIT \$**  
+580

## ► PRODUCTION TRAITS (81% REL)

Milk	% Fat	Fat	% Protein	Protein
<b>+1782 lbs</b>	<b>-0,06</b>	<b>+52</b>	<b>-0,01</b>	<b>+53</b>
K Casein <b>AB</b>		Beta Lactoglobuline <b>AA</b>		Beta Casein <b>A1A2</b>

## ► HEALTH TRAITS

SCS	<b>+2,71</b>	SCE	<b>+2,70</b>
PL	<b>+2,70</b>	DCE	<b>+2,90</b>
DPR	<b>-1,70</b>	FI	<b>-0,90</b>



## ► TYPE TRAITS

PTAT **+1,69** UDC **+1,37** FLC **+0,26**

Stature	>	1,60
Stenght	>	1,13
Body Dept	>	1,51
Dairy Form	>	2,25
Rump Angle	>	0,53
Thurl Width	>	0,74
Rear Legs-Side	>	0,36
Rear Legs-Rear	>	0,50
Foot Angle	>	0,68
Feet & Legs Score	>	0,60
F. Udder Attachment	>	1,01
Rear Udder Height	>	2,54
Rear Udder Width	>	2,68
Udder Cleft	>	1,39
Udder Depth	>	0,25
Front Teat Placement	>	1,29
Rear Teat P. Rear	>	1,49
Teat Lenght	>	-0,14





LA PORTEA  
INSEME

# BLANCO

IT103990033871 - 543H000290 - aAa 243



La Portea Inseme Blanco

**EINSTEIN**

Topnotch x Duke

**CASPER**

Isolabella Inseme  
Beautiful B+84

**HOTROD**

Isolabella Royal  
Bamby B+84

<b>TPI</b> <b>+2788</b>	<b>NET MERIT \$</b> <b>+670</b>	<b>CHEESE MERIT \$</b> <b>+689</b>
----------------------------	------------------------------------	---------------------------------------

► **PRODUCTION TRAITS (81% REL)**

Milk <b>+1011 lbs</b>	% Fat <b>+0,17</b>	Fat <b>+87</b>	% Protein <b>+0,07</b>	Protein <b>+52</b>
K Casein <b>AB</b>		Beta Lactoglobuline <b>AA</b>		Beta Casein <b>A1A2</b>

► **HEALTH TRAITS**

SCS <b>+2,69</b>	SCE <b>+2,50</b>	PL <b>+2,10</b>	DCE <b>+2,60</b>	DPR <b>-1,70</b>	FI <b>-1,50</b>
---------------------	---------------------	--------------------	---------------------	---------------------	--------------------



Isolabella Beautiful

► **TYPE TRAITS**

PTAT **+2,04** UDC **+2,22** FLC **+0,00**

Stature	1,82
Stenght	1,25
Body Dept	1,19
Dairy Form	1,32
Rump Angle	0,65
Thurl Width	2,22
Rear Legs-Side	-0,89
Rear Legs-Rear	-0,06
Foot Angle	0,86
Feet & Legs Score	0,50
F. Udder Attachment	2,56
Rear Udder Height	2,64
Rear Udder Width	3,61
Udder Cleft	2,19
Udder Depth	1,50
Front Teat Placement	1,53
Rear Teat P. Rear	2,08
Teat Lenght	-0,02

**New**

DG

# BOPPE

Legend

**CAPTAIN**

Charl x Sabre

**CHARL**

DG Brenna ET

**FLAGSHIP**

MS DG-TM Flagship  
Buoy-ET

<b>TPI</b> <b>+3075</b>	<b>NET MERIT \$</b> <b>+1146</b>	<b>CHEESE MERIT \$</b> <b>+1154</b>
----------------------------	-------------------------------------	--

► **PRODUCTION TRAITS (81% REL)**

Milk <b>+2060 lbs</b>	% Fat <b>+0,15</b>	Fat <b>+125</b>	% Protein <b>+0,04</b>	Protein <b>+76</b>
K Casein <b>AE</b>		Beta Lactoglobuline <b>AA</b>		Beta Casein <b>A2A2</b>

► **HEALTH TRAITS**

SCS <b>+2,97</b>	SCE <b>+1,50</b>	PL <b>+3,90</b>	DCE <b>+1,90</b>	DPR <b>-1,10</b>	FI <b>-0,40</b>
---------------------	---------------------	--------------------	---------------------	---------------------	--------------------

DE001406512669 - 643H005159



Ms Dg-TM Delta BLake-ET

► **TYPE TRAITS**

PTAT **+1,36** UDC **+1,17** FLC **+0,71**

Stature	-0,59
Stenght	-1,28
Body Dept	-0,55
Dairy Form	2,15
Rump Angle	-0,95
Thurl Width	0,43
Rear Legs-Side	0,00
Rear Legs-Rear	0,52
Foot Angle	-0,48
Feet & Legs Score	0,61
F. Udder Attachment	0,72
Rear Udder Height	2,23
Rear Udder Width	2,03
Udder Cleft	-0,16
Udder Depth	-0,38
Front Teat Placement	0,07
Rear Teat P. Rear	0,13
Teat Lenght	-0,88



**New**GO-FARM  
INSEME**BRABUS****ALTAWHEELHOUSE**

Pursuit x Duke

**GUARANTEE**Go-Farm Biga  
ET MB87**ALTAHOTROD**Go-Farm Bomba  
ET MB85**TPI**  
**+2913****NET MERIT \$**  
**+953****CHEESE MERIT \$**  
**+970****PRODUCTION TRAITS (79% REL)**

Milk	% Fat	Fat	% Protein	Protein
<b>+1139 lbs</b>	<b>+0,13</b>	<b>+81</b>	<b>+0,06</b>	<b>+54</b>
K Casein <b>AB</b>		Beta Lactoglobuline <b>AB</b>		Beta Casein <b>A2A2</b>

**HEALTH TRAITS**

SCS	<b>+2,70</b>	SCE	<b>+1,80</b>
PL	<b>+5,70</b>	DCE	<b>+1,60</b>
DPR	<b>-0,40</b>	FI	<b>+0,50</b>

IT019992289224 - 543H000310

SEXED SEMEN *Made in Italy*  
**FOEMINA**  
Sexed **ULTRA 4M****TYPE TRAITS**PTAT **+1,39** UDC **+1,77** FLC **+0,27**

Stature				<b>1,05</b>
Stenght				<b>0,28</b>
Body Dept				<b>0,19</b>
Dairy Form				<b>1,25</b>
Rump Angle				<b>0,26</b>
Thurl Width				<b>1,47</b>
Rear Legs-Side				<b>1,08</b>
Rear Legs-Rear				<b>0,28</b>
Foot Angle				<b>0,57</b>
Feet & Legs Score				<b>0,56</b>
F. Udder Attachment				<b>&gt; 2,05</b>
Rear Udder Height				<b>&gt; 1,79</b>
Rear Udder Width				<b>&gt; 2,51</b>
Udder Cleft				<b>1,32</b>
Udder Depth				<b>&gt; 2,01</b>
Front Teat Placement				<b>&gt; 1,56</b>
Rear Teat P. Rear				<b>1,48</b>
Teat Lenght				<b>-1,57</b>

ISOLABELLA  
INSEME**BRUNELLESCHI****DATELINE**

Hotline x Montross

**SOUND SYSTEM**Isolabella Cicala  
MB86**HOTROD**Isolabella Royal  
Bamby B+84**TPI**  
**+2623****NET MERIT \$**  
**+536****CHEESE MERIT \$**  
**+544****PRODUCTION TRAITS (81% REL)**

Milk	% Fat	Fat	% Protein	Protein
<b>+1549 lbs</b>	<b>+0,01</b>	<b>+62</b>	<b>+0,02</b>	<b>+54</b>
K Casein <b>AA</b>		Beta Lactoglobuline <b>AB</b>		Beta Casein <b>A2A2</b>

**HEALTH TRAITS**

SCS	<b>+2,80</b>	SCE	<b>+2,20</b>
PL	<b>+0,50</b>	DCE	<b>+1,50</b>
DPR	<b>-1,90</b>	FI	<b>-1,50</b>

IT001991277819 - 543HO00265 - aAa 243

SEXED SEMEN *Made in Italy*  
**FOEMINA**  
Sexed **ULTRA 4M**

Isolabella Inseme Brunelleschi

**TYPE TRAITS**PTAT **+1,84** UDC **+2,07** FLC **-0,54**

Stature				<b>&gt; 2,48</b>
Stenght				<b>0,90</b>
Body Dept				<b>1,24</b>
Dairy Form				<b>&gt; 2,20</b>
Rump Angle				<b>&gt; 1,76</b>
Thurl Width				<b>1,13</b>
Rear Legs-Side				<b>-0,81</b>
Rear Legs-Rear				<b>-0,04</b>
Foot Angle				<b>0,96</b>
Feet & Legs Score				<b>0,00</b>
F. Udder Attachment				<b>&gt; 2,55</b>
Rear Udder Height				<b>&gt; 3,15</b>
Rear Udder Width				<b>&gt; 3,03</b>
Udder Cleft				<b>1,35</b>
Udder Depth				<b>&gt; 1,86</b>
Front Teat Placement				<b>1,19</b>
Rear Teat P. Rear				<b>1,26</b>
Teat Lenght				<b>-0,04</b>





IDEVRA  
ROYAL INSEME

# CARLOMAGNO

IT019991894420 - 543HO00247 - aAa 234

SEXED SEMEN *Made in Italy*  
**FOEMINA**  
Sexed **ULTRA 4M**



Idevra Royal Inseme Carlomagno

**BRAMANTE**

Sound System x  
Hotrod

**TABASCO**

Idevra Tabasco  
Roberto MB87

**SUPERSHOT**

Idevra Royal Carlina  
B+81

**TPI**  
**+2687**

**NET MERIT \$**  
**+670**

**CHEESE MERIT \$**  
**+685**

► **PRODUCTION TRAITS (81% REL)**

Milk	% Fat	Fat	% Protein	Protein
<b>+1609 lbs</b>	<b>-0,01</b>	<b>+58</b>	<b>+0,07</b>	<b>+70</b>
K Casein <b>BE</b>		Beta Lactoglobuline <b>AA</b>		Beta Casein <b>A1A2</b>

► **HEALTH TRAITS**

SCS	<b>+2,84</b>	SCE	<b>+2,60</b>
PL	<b>+3,50</b>	DCE	<b>+2,40</b>
DPR	<b>-1,40</b>	FI	<b>-0,70</b>



Idevra Tabasco



► **TYPE TRAITS**

PTAT **+1,30** UDC **+0,58** FLC **-0,24**

Stature				<b>2,39</b>
Stenght				<b>0,51</b>
Body Dept				<b>1,10</b>
Dairy Form				<b>2,36</b>
Rump Angle				<b>0,98</b>
Thurl Width				<b>1,78</b>
Rear Legs-Side				<b>2,21</b>
Rear Legs-Rear				<b>0,00</b>
Foot Angle				<b>0,48</b>
Feet & Legs Score				<b>0,47</b>
F. Udder Attachment				<b>0,70</b>
Rear Udder Height				<b>0,93</b>
Rear Udder Width				<b>1,66</b>
Udder Cleft				<b>1,38</b>
Udder Depth				<b>0,96</b>
Front Teat Placement				<b>0,77</b>
Rear Teat P. Rear				<b>1,01</b>
Teat Length				<b>-0,74</b>

**New**

DG

# CARTIER Legend

DE001406512947 - 643H005169

SEXED SEMEN *Made in Italy*  
**FOEMINA**  
Sexed **ULTRA 4M**



Edg Christa HI 2066-ET

**CAPTAIN**

Charl x Sabre

**KENNEDY**

DG Chrysta ET

**JEDI**

Veelhorst Chrystal  
ET

**TPI**  
**+3022**

**NET MERIT \$**  
**+1107**

**CHEESE MERIT \$**  
**+1122**

► **PRODUCTION TRAITS (81% REL)**

Milk	% Fat	Fat	% Protein	Protein
<b>+1170 lbs</b>	<b>+0,18</b>	<b>+98</b>	<b>+0,08</b>	<b>+59</b>
K Casein <b>AB</b>		Beta Lactoglobuline <b>AA</b>		Beta Casein <b>A2A2</b>

► **HEALTH TRAITS**

SCS	<b>+2,90</b>	SCE	<b>+1,50</b>
PL	<b>+6,30</b>	DCE	<b>+1,50</b>
DPR	<b>+2,10</b>	FI	<b>+2,40</b>



► **TYPE TRAITS**

PTAT **+0,54** UDC **+1,00** FLC **+0,38**

Stature				<b>-0,74</b>
Stenght				<b>-1,09</b>
Body Dept				<b>-1,16</b>
Dairy Form				<b>0,50</b>
Rump Angle				<b>0,18</b>
Thurl Width				<b>0,20</b>
Rear Legs-Side				<b>0,11</b>
Rear Legs-Rear				<b>0,29</b>
Foot Angle				<b>-0,57</b>
Feet & Legs Score				<b>0,22</b>
F. Udder Attachment				<b>0,89</b>
Rear Udder Height				<b>1,33</b>
Rear Udder Width				<b>1,10</b>
Udder Cleft				<b>-0,20</b>
Udder Depth				<b>0,46</b>
Front Teat Placement				<b>0,08</b>
Rear Teat P. Rear				<b>0,14</b>
Teat Length				<b>-0,49</b>



IDEVRA  
ROYAL

## CELLINI

IT019991816264 - 543HO00220 - aAa 423

SEXED SEMEN *Made in Italy*  
**FOEMINA**  
Sexed **ULTRA 4M**

Idevra Royal Cellini

**NEBULA** × **JAGGER** × **JUDO**  
Charley x Balisto × Idevra Jagger B+78 × Idevra Royal Celeste B+84

TPI  
**+2529**NET MERIT \$  
**+563**CHEESE MERIT \$  
**+569**

## ► PRODUCTION TRAITS (81% REL)

Milk	% Fat	Fat	% Protein	Protein
<b>+1174 lbs</b>	<b>-0,01</b>	<b>+43</b>	<b>+0,01</b>	<b>+38</b>
K Casein <b>BB</b>		Beta Lactoglobuline <b>AB</b>		Beta Casein <b>A2A2</b>

## ► HEALTH TRAITS

SCS	<b>+2,81</b>	SCE	<b>+1,90</b>
PL	<b>+2,60</b>	DCE	<b>+1,50</b>
DPR	<b>-0,20</b>	FI	<b>+0,80</b>

## ► TYPE TRAITS

PTAT **+0,73** UDC **+0,52** FLC **+0,42**

Stature				<b>0,33</b>
Stenght				<b>-0,04</b>
Body Dept				<b>0,32</b>
Dairy Form				<b>1,14</b>
Rump Angle				<b>-0,12</b>
Thurl Width				<b>1,15</b>
Rear Legs-Side				<b>0,37</b>
Rear Legs-Rear				<b>0,58</b>
Foot Angle				<b>0,39</b>
Feet & Legs Score				<b>0,44</b>
F. Udder Attachment				<b>0,28</b>
Rear Udder Height				<b>0,78</b>
Rear Udder Width				<b>1,01</b>
Udder Cleft				<b>1,12</b>
Udder Depth				<b>-0,29</b>
Front Teat Placement				<b>1,42</b>
Rear Teat P. Rear				<b>1,31</b>
Teat Lenght				<b>0,59</b>

**New**

DGF

## CROCODILE Legend

DE001406512921 - 643H005168

SEXED SEMEN *Made in Italy*  
**FOEMINA**  
Sexed **ULTRA 4M**

???

**CAPTAIN** × **CHARL** × **MONTANA**  
Charl x Sabre × DGF Clem ET × Eba Martha ET

TPI  
**+3010**NET MERIT \$  
**+1046**CHEESE MERIT \$  
**+1062**

## ► PRODUCTION TRAITS (80% REL)

Milk	% Fat	Fat	% Protein	Protein
<b>+1163 lbs</b>	<b>+0,19</b>	<b>+100</b>	<b>+0,05</b>	<b>+52</b>
K Casein <b>AB</b>		Beta Lactoglobuline <b>AA</b>		Beta Casein <b>A2A2</b>

## ► HEALTH TRAITS

SCS	<b>+2,65</b>	SCE	<b>+1,50</b>
PL	<b>+6,50</b>	DCE	<b>+1,80</b>
DPR	<b>+0,90</b>	FI	<b>+1,20</b>

## ► TYPE TRAITS

PTAT **+0,99** UDC **+1,31** FLC **+0,65**

Stature				<b>-0,34</b>
Stenght				<b>-0,82</b>
Body Dept				<b>-0,95</b>
Dairy Form				<b>-0,05</b>
Rump Angle				<b>0,75</b>
Thurl Width				<b>-0,09</b>
Rear Legs-Side				<b>-0,26</b>
Rear Legs-Rear				<b>0,39</b>
Foot Angle				<b>-0,10</b>
Feet & Legs Score				<b>0,62</b>
F. Udder Attachment				<b>1,73</b>
Rear Udder Height				<b>1,77</b>
Rear Udder Width				<b>1,01</b>
Udder Cleft				<b>-0,05</b>
Udder Depth				<b>1,12</b>
Front Teat Placement				<b>0,04</b>
Rear Teat P. Rear				<b>-0,07</b>
Teat Lenght				<b>-0,62</b>



BORETTO INSEME **DADO**

IT001991210622 - 543HO00241 - aAa 324



Boretto Inseme Dado

**OUTBACK** × **FRANCHISE** × **MOGUL**  
 Spectre x Troy × Boretto MB85 × Boretto Uganda Gmv MB88

<b>TPI</b> <b>+2629</b>	<b>NET MERIT \$</b> <b>+730</b>	<b>CHEESE MERIT \$</b> <b>+745</b>
----------------------------	------------------------------------	---------------------------------------

► **PRODUCTION TRAITS (81% REL)**

Milk <b>+167 lbs</b>	% Fat <b>+0,24</b>	Fat <b>+73</b>	% Protein <b>+0,06</b>	Protein <b>+22</b>
K Casein <b>AB</b>		Beta Lactoglobuline <b>AA</b>		Beta Casein <b>A2A2</b>

► **HEALTH TRAITS**

SCS	<b>+2,77</b>	SCE	<b>+0,80</b>
PL	<b>+4,30</b>	DCE	<b>+1,60</b>
DPR	<b>+0,60</b>	FI	<b>+0,90</b>

► **TYPE TRAITS**

PTAT **+0,30** UDC **+1,12** FLC **+0,01**

Stature				<b>-0,71</b>
Stenght				<b>-1,14</b>
Body Dept				<b>-1,10</b>
Dairy Form				<b>0,07</b>
Rump Angle				<b>-0,06</b>
Thurl Width				<b>-0,47</b>
Rear Legs-Side				<b>-1,74</b>
Rear Legs-Rear				<b>0,08</b>
Foot Angle				<b>0,47</b>
Feet & Legs Score				<b>-0,16</b>
F. Udder Attachment				<b>&gt; 1,54</b>
Rear Udder Height				<b>1,05</b>
Rear Udder Width				<b>0,60</b>
Udder Cleft				<b>-0,53</b>
Udder Depth				<b>1,36</b>
Front Teat Placement				<b>0,24</b>
Rear Teat P. Rear				<b>0,01</b>
Teat Lenght				<b>-0,29</b>



IDEVRA INSEME **DESICA**

IT019992032586 - 543HO00254 - aAa 342

SEXED SEMEN *Made in Italy*  
**FOEMINA**  
 Sexed **ULTRA**



Idevra Inseme Desica

**DEREK** × **SOUND SYSTEM** × **MAZZARRI**  
 Charley x 1stclass × Baro Sound Inseme Diletta MB85 × Baro Mazzarri Boston MB87

<b>TPI</b> <b>+2640</b>	<b>NET MERIT \$</b> <b>+691</b>	<b>CHEESE MERIT \$</b> <b>+716</b>
----------------------------	------------------------------------	---------------------------------------

► **PRODUCTION TRAITS (82% REL)**

Milk <b>-88 lbs</b>	% Fat <b>+0,18</b>	Fat <b>+47</b>	% Protein <b>+0,12</b>	Protein <b>+30</b>
K Casein <b>BB</b>		Beta Lactoglobuline <b>AA</b>		Beta Casein <b>A1A2</b>

► **HEALTH TRAITS**

SCS	<b>+2,67</b>	SCE	<b>+2,00</b>
PL	<b>+5,00</b>	DCE	<b>+2,00</b>
DPR	<b>+2,50</b>	FI	<b>+2,50</b>



Sound System Diletta - Dam of Desica

► **TYPE TRAITS**

PTAT **+0,43** UDC **+1,03** FLC **-0,30**

Stature				<b>0,08</b>
Stenght				<b>-0,47</b>
Body Dept				<b>-0,45</b>
Dairy Form				<b>0,04</b>
Rump Angle				<b>-0,23</b>
Thurl Width				<b>-0,61</b>
Rear Legs-Side				<b>0,50</b>
Rear Legs-Rear				<b>-0,49</b>
Foot Angle				<b>-0,05</b>
Feet & Legs Score				<b>-0,20</b>
F. Udder Attachment				<b>&gt; 1,55</b>
Rear Udder Height				<b>0,82</b>
Rear Udder Width				<b>-0,01</b>
Udder Cleft				<b>1,21</b>
Udder Depth				<b>&gt; 1,72</b>
Front Teat Placement				<b>1,27</b>
Rear Teat P. Rear				<b>&gt; 1,80</b>
Teat Lenght				<b>-1,11</b>



ISOLABELLA  
INSEME

## DISTEFANO

## HOTHAND

Hotline x Montross

## TOOHOT

Go-Farm Island

## SUPERMAN

Kns Inka MB85

TPI  
**+2796**NET MERIT \$  
**+720**CHEESE MERIT \$  
**+740**

## ► PRODUCTION TRAITS (81% REL)

Milk	% Fat	Fat	% Protein	Protein
<b>+1002 lbs</b>	<b>+0,11</b>	<b>+71</b>	<b>+0,08</b>	<b>+53</b>
K Casein <b>AA</b>		Beta Lactoglobuline <b>AB</b>		Beta Casein <b>A2A2</b>

## ► HEALTH TRAITS

SCS	<b>+2,68</b>	SCE	<b>+1,80</b>
PL	<b>+3,30</b>	DCE	<b>+2,20</b>
DPR	<b>-1,20</b>	FI	<b>-0,60</b>



IT001991277781 - 543HO00252 - aAa 432

SEXED SEMEN *Made in Italy*  
**FOEMINA**  
Sexed **ULTRA 4M**

## ► TYPE TRAITS

PTAT **+1,74** UDC **+2,04** FLC **+0,11**

Stature	>	2,06
Stenght		0,95
Body Dept		0,92
Dairy Form		0,93
Rump Angle		1,00
Thurl Width		0,32
Rear Legs-Side		-0,24
Rear Legs-Rear		0,77
Foot Angle		1,27
Feet & Legs Score		0,42
F. Udder Attachment	>	2,63
Rear Udder Height	>	2,68
Rear Udder Width	>	2,48
Udder Cleft	>	1,56
Udder Depth	>	2,43
Front Teat Placement		0,60
Rear Teat P. Rear		0,62
Teat Lenght		-0,07

INSEME

## ELETTO

## GIORDANO

Perseus x Rodanas

## FLAGSHIP

Flagship Bomb Eliza  
MB85

## BOMBERO

Royal Bombeud  
Mattarella MB89TPI  
**+2746**NET MERIT \$  
**+689**CHEESE MERIT \$  
**+716**

## ► PRODUCTION TRAITS (81% REL)

Milk	% Fat	Fat	% Protein	Protein
<b>+29lbs</b>	<b>+0,25</b>	<b>+70</b>	<b>+0,11</b>	<b>+33</b>
K Casein <b>BB</b>		Beta Lactoglobuline <b>AA</b>		Beta Casein <b>A1A2</b>

## ► HEALTH TRAITS

SCS	<b>+2,60</b>	SCE	<b>+2,10</b>
PL	<b>+4,30</b>	DCE	<b>+2,10</b>
DPR	<b>+2,00</b>	FI	<b>+2,00</b>

IT024990682547 - 543HO00261 - aAa 234

SEXED SEMEN *Made in Italy*  
**FOEMINA**  
Sexed **ULTRA**

## ► TYPE TRAITS

PTAT **+0,86** UDC **+1,72** FLC **-0,33**

Stature		0,57
Stenght		0,40
Body Dept		0,20
Dairy Form		0,21
Rump Angle		-1,02
Thurl Width		1,16
Rear Legs-Side		-1,54
Rear Legs-Rear		-0,17
Foot Angle		1,18
Feet & Legs Score		-0,22
F. Udder Attachment		1,43
Rear Udder Height	>	2,08
Rear Udder Width	>	1,87
Udder Cleft	>	1,81
Udder Depth	>	1,60
Front Teat Placement		1,14
Rear Teat P. Rear	>	1,62
Teat Lenght		0,28

SABBIONA **EMERITO**

IT098990684345 - 543HO00221 - aAa 243615



**MONTOYA** × **JEDI** × **ROBUST**  
 Moreno x Supersire × Cnn Jedi Shaddow MB89 × Miss Amerika MB85

**TPI** +2627    **NET MERIT \$** +652    **CHEESE MERIT \$** +663

► **PRODUCTION TRAITS (81% REL)**

Milk	% Fat	Fat	% Protein	Protein
<b>+1809 lbs</b>	<b>-0,06</b>	<b>+53</b>	<b>+0,04</b>	<b>+67</b>
K Casein <b>AE</b>		Beta Lactoglobuline <b>AB</b>		Beta Casein <b>A1A2</b>

► **HEALTH TRAITS**

SCS	<b>+2,82</b>	SCE	<b>+2,40</b>
PL	<b>+3,50</b>	DCE	<b>+2,30</b>
DPR	<b>-2,10</b>	FI	<b>-1,40</b>



► **TYPE TRAITS**

PTAT **+1,25**    UDC **+0,92**    FLC **-0,70**

Stature	>	2,31
Stenght	>	1,38
Body Dept	>	1,34
Dairy Form	>	1,35
Rump Angle	>	2,48
Thurl Width	>	1,07
Rear Legs-Side	<	-0,22
Rear Legs-Rear	<	-0,56
Foot Angle	>	0,24
Feet & Legs Score	<	-0,07
F. Udder Attachment	>	1,18
Rear Udder Height	>	1,84
Rear Udder Width	>	1,64
Udder Cleft	>	0,72
Udder Depth	>	1,04
Front Teat Placement	>	0,70
Rear Teat P. Rear	>	0,94
Teat Lenght	>	0,26

ISOLABELLA INSEME **ERIK P**

IT001991454452 - 543HO00303



**HEART**    **HOTSPOT**    **DUKE**  
 Renegade x Frazzled    Vogue Hotspot Emma-P    Silverridge Duke Elsa-P MB87

**TPI** +2806    **NET MERIT \$** +685    **CHEESE MERIT \$** +704

► **PRODUCTION TRAITS (80% REL)**

Milk	% Fat	Fat	% Protein	Protein
<b>+966 lbs</b>	<b>+0,15</b>	<b>+80</b>	<b>+0,09</b>	<b>+56</b>
K Casein <b>AB</b>		Beta Lactoglobuline <b>AB</b>		Beta Casein <b>A1A1</b>

► **HEALTH TRAITS**

SCS	<b>+2,81</b>	SCE	<b>+2,70</b>
PL	<b>+2,50</b>	DCE	<b>+2,30</b>
DPR	<b>+0,70</b>	FI	<b>+1,00</b>

► **TYPE TRAITS**

PTAT **+1,36**    UDC **+1,09**    FLC **+0,34**

Stature	>	1,78
Stenght	>	1,10
Body Dept	>	0,76
Dairy Form	>	0,62
Rump Angle	>	1,16
Thurl Width	>	0,99
Rear Legs-Side	<	-0,56
Rear Legs-Rear	<	0,68
Foot Angle	>	0,99
Feet & Legs Score	>	0,69
F. Udder Attachment	>	1,61
Rear Udder Height	>	1,95
Rear Udder Width	>	1,98
Udder Cleft	>	0,11
Udder Depth	>	1,34
Front Teat Placement	<	-0,11
Rear Teat P. Rear	<	-0,01
Teat Lenght	>	1,04



GO-FARM  
INSEME

## FABIUS

## ZAZZLE

Marius x Topshot

## LAWSON

Progenesis Flora 3902

## FRAZZLED

Welcome Frazzled  
FanfareTPI  
**+2915**NET MERIT \$  
**+907**CHEESE MERIT \$  
**+930**

## ► PRODUCTION TRAITS (81% REL)

Milk	% Fat	Fat	% Protein	Protein
<b>+625 lbs</b>	<b>+0,24</b>	<b>+94</b>	<b>+0,1</b>	<b>+47</b>
K Casein <b>BB</b>		Beta Lactoglobuline <b>AA</b>		Beta Casein <b>A1A1</b>

## ► HEALTH TRAITS

SCS	<b>+2,65</b>	SCE	<b>+2,00</b>
PL	<b>+5,00</b>	DCE	<b>+1,80</b>
DPR	<b>-0,20</b>	FI	<b>+0,30</b>



IT019992239603 - 543HO00294 - aAa 243

SEXED SEMEN *made in Italy*  
**FOEMINA**  
Sexed **ULTRA 4M**

## ► TYPE TRAITS

PTAT **+1,30** UDC **+1,51** FLC **+0,35**

Stature				<b>1,07</b>
Stenght				<b>0,25</b>
Body Dept				<b>-0,04</b>
Dairy Form				<b>0,63</b>
Rump Angle				<b>0,10</b>
Thurl Width				<b>1,09</b>
Rear Legs-Side				<b>0,28</b>
Rear Legs-Rear				<b>0,02</b>
Foot Angle				<b>0,70</b>
Feet & Legs Score				<b>0,69</b>
F. Udder Attachment				<b>&gt; 2,35</b>
Rear Udder Height				<b>&gt; 1,80</b>
Rear Udder Width				<b>&gt; 1,75</b>
Udder Cleft				<b>-0,14</b>
Udder Depth				<b>&gt; 1,96</b>
Front Teat Placement				<b>0,83</b>
Rear Teat P. Rear				<b>0,06</b>
Teat Lenght				<b>-0,52</b>

-0,5 0 +0,5 +1 +1,5

IDEVRA RYL  
INSEME

## GHIBERTI

## BRAMANTE

Sound System x  
Hotrod

## HOTLINE

Idevra Royal Granata  
MB88

## RODANAS

Idevra Royal Grinta  
MB88TPI  
**+2699**NET MERIT \$  
**+573**CHEESE MERIT \$  
**+591**

## ► PRODUCTION TRAITS (81% REL)

Milk	% Fat	Fat	% Protein	Protein
<b>+608 lbs</b>	<b>+0,18</b>	<b>+76</b>	<b>+0,08</b>	<b>+42</b>
K Casein <b>AA</b>		Beta Lactoglobuline <b>AB</b>		Beta Casein <b>A2A2</b>

## ► HEALTH TRAITS

SCS	<b>+2,75</b>	SCE	<b>+1,60</b>
PL	<b>+1,00</b>	DCE	<b>+2,00</b>
DPR	<b>-2,50</b>	FI	<b>-1,80</b>

IT019991894454 - 543HO00244 - aAa 234



## ► TYPE TRAITS

PTAT **+2,16** UDC **+2,12** FLC **+1,10**

Stature				<b>&gt; 2,69</b>
Stenght				<b>0,40</b>
Body Dept				<b>0,76</b>
Dairy Form				<b>&gt; 1,67</b>
Rump Angle				<b>0,73</b>
Thurl Width				<b>0,85</b>
Rear Legs-Side				<b>-0,39</b>
Rear Legs-Rear				<b>&gt; 1,66</b>
Foot Angle				<b>&gt; 2,45</b>
Feet & Legs Score				<b>&gt; 1,51</b>
F. Udder Attachment				<b>&gt; 2,87</b>
Rear Udder Height				<b>&gt; 2,55</b>
Rear Udder Width				<b>&gt; 2,50</b>
Udder Cleft				<b>&gt; 2,39</b>
Udder Depth				<b>&gt; 3,07</b>
Front Teat Placement				<b>&gt; 2,42</b>
Rear Teat P. Rear				<b>&gt; 2,77</b>
Teat Lenght				<b>-1,67</b>

-0,5 0 +0,5 +1 +1,5





**New**

ISOLABELLA  
INSEME

# GRIFONE

IT001991497906 - 543H000309



**MACHONE** × **SOUNDCLOUD** × **FORTUNE**  
 Milktime x Romero × Westcoast SNDCLD GRAC6042 × Westcoast Fortune GRC4004 GP80

**TPI** +2800      **NET MERIT \$** +625      **CHEESE MERIT \$** +649

▶ PRODUCTION TRAITS (79% REL)				
Milk	% Fat	Fat	% Protein	Protein
<b>+792 lbs</b>	<b>+0,07</b>	<b>+51</b>	<b>+0,08</b>	<b>+48</b>
K Casein <b>BE</b>		Beta Lactoglobuline <b>AA</b>		Beta Casein <b>A1A1</b>

▶ HEALTH TRAITS			
SCS	<b>+2,49</b>	SCE	<b>+2,60</b>
PL	<b>+4,40</b>	DCE	<b>+2,40</b>
DPR	<b>+0,90</b>	FI	<b>+0,80</b>

▶ TYPE TRAITS			
PTAT	<b>+2,26</b>	UDC	<b>+2,02</b>
		FLC	<b>+0,57</b>

Stature	>	2,20
Stenght	>	1,31
Body Dept	>	1,31
Dairy Form	>	1,33
Rump Angle	<	-0,18
Thurl Width	>	2,32
Rear Legs-Side	<	-0,80
Rear Legs-Rear	>	1,32
Foot Angle	>	1,35
Feet & Legs Score	>	0,89
F. Udder Attachment	>	2,22
Rear Udder Height	>	2,44
Rear Udder Width	>	2,65
Udder Cleft	>	2,62
Udder Depth	>	2,34
Front Teat Placement	>	1,78
Rear Teat P. Rear	>	2,55
Teat Lenght	<	-0,44

**New**

ISOLABELLA

# GTA

IT001991497907 - 543H000308



**MACHONE** × **SOUNDCLOUD** × **FORTUNE**  
 Milktime x Romero × Westcoast SNDCLD GRAC6042 × Westcoast Fortune GRC4004 GP80

**TPI** +2772      **NET MERIT \$** +696      **CHEESE MERIT \$** +717

▶ PRODUCTION TRAITS (79% REL)				
Milk	% Fat	Fat	% Protein	Protein
<b>+1041 lbs</b>	<b>+0,08</b>	<b>+62</b>	<b>+0,07</b>	<b>+52</b>
K Casein <b>AA</b>		Beta Lactoglobuline <b>AA</b>		Beta Casein <b>A1A2</b>

▶ HEALTH TRAITS			
SCS	<b>+2,56</b>	SCE	<b>+2,20</b>
PL	<b>+3,30</b>	DCE	<b>+2,00</b>
DPR	<b>-0,60</b>	FI	<b>+0,00</b>

▶ TYPE TRAITS			
PTAT	<b>+1,81</b>	UDC	<b>+1,53</b>
		FLC	<b>+0,31</b>

Stature	>	2,14
Stenght	>	1,27
Body Dept	>	1,24
Dairy Form	>	1,45
Rump Angle	>	0,62
Thurl Width	>	1,62
Rear Legs-Side	<	-1,11
Rear Legs-Rear	>	1,03
Foot Angle	>	1,27
Feet & Legs Score	>	0,66
F. Udder Attachment	>	1,96
Rear Udder Height	>	2,15
Rear Udder Width	>	2,21
Udder Cleft	>	1,40
Udder Depth	>	1,79
Front Teat Placement	>	1,10
Rear Teat P. Rear	>	1,25
Teat Lenght	<	-0,71

RIOZZO  
INSEME

## INDRO

## HOTHAND

Hotline x Montross

## TOOHOT

Go-Farm Island

## SUPERMAN

KNS Inka MB85

TPI  
**+2628**NET MERIT \$  
**+483**CHEESE MERIT \$  
**+491**

## ► PRODUCTION TRAITS (81% REL)

Milk	% Fat	Fat	% Protein	Protein
<b>+1387 lbs</b>	<b>+0,01</b>	<b>+57</b>	<b>+0,04</b>	<b>+55</b>
K Casein <b>AE</b>		Beta Lactoglobuline <b>AB</b>		Beta Casein <b>A1A2</b>

## ► HEALTH TRAITS

SCS	<b>+2,96</b>	SCE	<b>+2,00</b>
PL	<b>+0,40</b>	DCE	<b>+2,30</b>
DPR	<b>-2,30</b>	FI	<b>-1,30</b>



IT015990518306 - 543HO00245 - aAa 234

SEXED SEMEN *Made in Italy*  
**FOEMINA**  
Sexed **ULTRA 4M**

## ► TYPE TRAITS

PTAT **+1,96** UDC **+2,26** FLC **+0,22**

Stature	>	2,16
Stenght		1,25
Body Dept		1,36
Dairy Form	>	1,66
Rump Angle		0,83
Thurl Width		1,24
Rear Legs-Side		-1,16
Rear Legs-Rear		1,17
Foot Angle	>	1,82
Feet & Legs Score		0,47
F. Udder Attachment	>	2,62
Rear Udder Height	>	3,07
Rear Udder Width	>	3,41
Udder Cleft		1,41
Udder Depth	>	2,11
Front Teat Placement		0,87
Rear Teat P. Rear		1,10
Teat Lenght		0,06

BODENGO  
INSEME

## LILIUM

## MACHONE

Milktime x Romero

## NEBULA

C.M.E. Nebula Lexy  
ET MB85

## JEDI

C.M.E. Jedi Zetajones

TPI  
**+2793**NET MERIT \$  
**+737**CHEESE MERIT \$  
**+755**

## ► PRODUCTION TRAITS (79% REL)

Milk	% Fat	Fat	% Protein	Protein
<b>+1464 lbs</b>	<b>+0,01</b>	<b>+58</b>	<b>+0,06</b>	<b>+62</b>
K Casein <b>AB</b>		Beta Lactoglobuline <b>AA</b>		Beta Casein <b>A1A2</b>

## ► HEALTH TRAITS

SCS	<b>+2,63</b>	SCE	<b>+2,10</b>
PL	<b>+4,10</b>	DCE	<b>+2,00</b>
DPR	<b>-0,70</b>	FI	<b>-0,20</b>

IT014990196057 - 543HO00305

SEXED SEMEN *Made in Italy*  
**FOEMINA**  
Sexed **ULTRA 4M**

## ► TYPE TRAITS

PTAT **+1,26** UDC **+1,76** FLC **+0,30**

Stature		0,44
Stenght		0,43
Body Dept		0,20
Dairy Form		0,32
Rump Angle		0,38
Thurl Width		0,96
Rear Legs-Side		-1,13
Rear Legs-Rear		0,52
Foot Angle		0,66
Feet & Legs Score		0,35
F. Udder Attachment		1,49
Rear Udder Height	>	2,09
Rear Udder Width	>	2,39
Udder Cleft	>	1,99
Udder Depth		0,94
Front Teat Placement		1,25
Rear Teat P. Rear	>	1,84
Teat Lenght		0,11



CIOLFARM  
INSEME

# LUDWIG

IT017992639133 - 543HO00304

SEXED SEMEN *Made in Italy*  
**FOEMINA**  
Sexed **ULTRA 4M**



Ciolfarm Inseme Ludwig

### CAPONE

Renegade x Modesty

### BRAMANTE

Ciolfarm Bramante  
Soler MB85

### BALISTO

Ciolfarm Balisto  
Soleil EX90

**TPI**  
**+2752**

**NET MERIT \$**  
**+774**

**CHEESE MERIT \$**  
**+792**

#### ► PRODUCTION TRAITS (79% REL)

Milk	% Fat	Fat	% Protein	Protein
<b>+1344 lbs</b>	<b>+0,03</b>	<b>+61</b>	<b>+0,07</b>	<b>+63</b>
K Casein <b>BB</b>		Beta Lactoglobuline <b>AA</b>		Beta Casein <b>A2A2</b>

#### ► HEALTH TRAITS

SCS	<b>+2,72</b>	SCE	<b>+1,80</b>
PL	<b>+4,60</b>	DCE	<b>+2,00</b>
DPR	<b>-1,40</b>	FI	<b>-0,50</b>

#### ► TYPE TRAITS

PTAT **+1,04** UDC **+0,70** FLC **+0,82**

Stature				<b>1,11</b>
Stenght				<b>0,25</b>
Body Dept				<b>0,45</b>
Dairy Form				<b>1,32</b>
Rump Angle				<b>-0,83</b>
Thurl Width				<b>-0,14</b>
Rear Legs-Side				<b>0,07</b>
Rear Legs-Rear				<b>1,05</b>
Foot Angle				<b>1,23</b>
Feet & Legs Score				<b>0,96</b>
F. Udder Attachment				<b>1,05</b>
Rear Udder Height				<b>1,57</b>
Rear Udder Width				<b>1,32</b>
Udder Cleft				<b>-0,02</b>
Udder Depth				<b>0,96</b>
Front Teat Placement				<b>-0,53</b>
Rear Teat P. Rear				<b>-0,69</b>
Teat Lenght				<b>1,56</b>



ZANI  
INSEME

# MACCHIAVELLI

IT017992074001 - 543HO00223 - aAa 423

SEXED SEMEN *Made in Italy*  
**FOEMINA**  
Sexed **ULTRA 4M**



Zani Inseme Macchiavelli

### NEBULA

Charley x Balisto

### SILVER

Zani Silver Ambra  
MB86

### SUPERSIRE

Zani Supersire  
Orietta MB87

**TPI**  
**+2547**

**NET MERIT \$**  
**+591**

**CHEESE MERIT \$**  
**+602**

#### ► PRODUCTION TRAITS (82% REL)

Milk	% Fat	Fat	% Protein	Protein
<b>+1225 lbs</b>	<b>-0,01</b>	<b>+44</b>	<b>+0,03</b>	<b>+48</b>
K Casein <b>AB</b>		Beta Lactoglobuline <b>AA</b>		Beta Casein <b>A2A2</b>

#### ► HEALTH TRAITS

SCS	<b>+2,76</b>	SCE	<b>+1,50</b>
PL	<b>+3,40</b>	DCE	<b>+1,80</b>
DPR	<b>-0,40</b>	FI	<b>-0,20</b>

#### ► TYPE TRAITS

PTAT **+0,70** UDC **+0,60** FLC **+0,25**

Stature				<b>0,63</b>
Stenght				<b>0,25</b>
Body Dept				<b>0,22</b>
Dairy Form				<b>0,39</b>
Rump Angle				<b>0,12</b>
Thurl Width				<b>-0,36</b>
Rear Legs-Side				<b>0,49</b>
Rear Legs-Rear				<b>0,31</b>
Foot Angle				<b>0,51</b>
Feet & Legs Score				<b>0,38</b>
F. Udder Attachment				<b>0,97</b>
Rear Udder Height				<b>1,17</b>
Rear Udder Width				<b>0,77</b>
Udder Cleft				<b>0,07</b>
Udder Depth				<b>0,53</b>
Front Teat Placement				<b>0,25</b>
Rear Teat P. Rear				<b>-0,29</b>
Teat Lenght				<b>0,66</b>

Zani Silver Ambra





ISOLABELLA  
INSEME

## MAKUMBA

## PLINKO

Marius x Topshot

## DEREK

Isolabella Dogsitter  
ET GP81

## PERSEUS

Isolabella Meghan ET

TPI  
**+2814**NET MERIT \$  
**+819**CHEESE MERIT \$  
**+835**

## ► PRODUCTION TRAITS (80% REL)

Milk	% Fat	Fat	% Protein	Protein
<b>+1136 lbs</b>	<b>+0,17</b>	<b>+92</b>	<b>+0,07</b>	<b>+56</b>
K Casein <b>AB</b>		Beta Lactoglobuline <b>AB</b>		Beta Casein <b>A2A2</b>

## ► HEALTH TRAITS

SCS	<b>+2,79</b>	SCE	<b>+1,70</b>
PL	<b>+3,60</b>	DCE	<b>+1,70</b>
DPR	<b>-0,70</b>	FI	<b>-0,10</b>

IT001991424870 - 543HO00296

SEXED SEMEN *Made in Italy*  
**FOEMINA**  
Sexed **ULTRA 4M**

## ► TYPE TRAITS

PTAT **+0,88** UDC **+0,88** FLC **+0,14**

Stature				<b>0,51</b>
Stenght				<b>-0,13</b>
Body Dept				<b>-0,07</b>
Dairy Form				<b>1,12</b>
Rump Angle				<b>0,02</b>
Thurl Width				<b>0,62</b>
Rear Legs-Side				<b>-0,38</b>
Rear Legs-Rear				<b>0,10</b>
Foot Angle				<b>0,28</b>
Feet & Legs Score				<b>0,28</b>
F. Udder Attachment				<b>0,58</b>
Rear Udder Height				<b>1,09</b>
Rear Udder Width				<b>1,60</b>
Udder Cleft				<b>0,97</b>
Udder Depth				<b>0,51</b>
Front Teat Placement				<b>0,19</b>
Rear Teat P. Rear				<b>0,76</b>
Teat Lenght				<b>0,17</b>

CIRIO  
AGRICOLA  
INSEME

## MANFREDI

## PADAWAN

Jedi x Enforcer

## BALISTO

Shotglass x Robust

## DONATELLO

Robust x Planet

TPI  
**+2637**NET MERIT \$  
**+570**CHEESE MERIT \$  
**+578**

## ► PRODUCTION TRAITS (81% REL)

Milk	% Fat	Fat	% Protein	Protein
<b>+1363 lbs</b>	<b>-0,13</b>	<b>+14</b>	<b>+0,02</b>	<b>+47</b>
K Casein <b>AB</b>		Beta Lactoglobuline <b>AA</b>		Beta Casein <b>A2A2</b>

## ► HEALTH TRAITS

SCS	<b>+2,79</b>	SCE	<b>+1,90</b>
PL	<b>+4,60</b>	DCE	<b>+2,30</b>
DPR	<b>+2,30</b>	FI	<b>+2,70</b>

IT061990879534 - 543HO00238 - aAa 243



## ► TYPE TRAITS

PTAT **+1,23** UDC **+1,95** FLC **+0,43**

Stature				<b>-0,07</b>
Stenght				<b>-0,36</b>
Body Dept				<b>-0,68</b>
Dairy Form				<b>0,30</b>
Rump Angle				<b>-0,74</b>
Thurl Width				<b>-0,23</b>
Rear Legs-Side				<b>-1,12</b>
Rear Legs-Rear				<b>0,57</b>
Foot Angle				<b>0,63</b>
Feet & Legs Score				<b>0,35</b>
F. Udder Attachment				<b>2,05</b>
Rear Udder Height				<b>2,26</b>
Rear Udder Width				<b>2,02</b>
Udder Cleft				<b>0,93</b>
Udder Depth				<b>1,66</b>
Front Teat Placement				<b>1,14</b>
Rear Teat P. Rear				<b>1,69</b>
Teat Lenght				<b>-1,00</b>



CIRIO AGRICOLA INSEME **MANTRA**

IT061991006903 - 543HO00291 - aAa 432



Cirio Agricola Inseme Mantra

**TRY ME** × **YODA** × **DRAFTPICK**  
 Resolve x Profit × Pine-Tree 4425Yoda 7994 × Westcoast Dpick Chantal 4425

**TPI** +2790    **NET MERIT \$** +808    **CHEESE MERIT \$** +829

► **PRODUCTION TRAITS (82% REL)**

Milk	% Fat	Fat	% Protein	Protein
<b>+975 lbs</b>	<b>+0,09</b>	<b>+65</b>	<b>+0,1</b>	<b>+58</b>
K Casein <b>BB</b>		Beta Lactoglobuline <b>BB</b>		Beta Casein <b>A1A2</b>

► **HEALTH TRAITS**

SCS	<b>+2,78</b>	SCE	<b>+2,60</b>
PL	<b>+5,10</b>	DCE	<b>+2,30</b>
DPR	<b>-1,90</b>	FI	<b>-1,20</b>

► **TYPE TRAITS**

PTAT **+1,96**    UDC **+1,72**    FLC **+0,47**

Stature	1,97
Stenght	0,37
Body Dept	0,76
Dairy Form	1,78
Rump Angle	1,11
Thurl Width	0,06
Rear Legs-Side	-0,77
Rear Legs-Rear	0,60
Foot Angle	0,99
Feet & Legs Score	0,94
F. Udder Attachment	2,09
Rear Udder Height	2,61
Rear Udder Width	2,06
Udder Cleft	1,56
Udder Depth	1,85
Front Teat Placement	1,30
Rear Teat P. Rear	1,73
Teat Lenght	-0,67

GO-FARM INSEME **NIBALI**

IT019991867324 - 543HO00227 - aAa 243



Go-Farm Inseme Nibali

**PADAWAN** × **EAGLE** × **POWERBALL**  
 Jedi x Enforcer × Go-Farm Natasha B+84 × Dg R Nourya MB85

**TPI** +2445    **NET MERIT \$** +420    **CHEESE MERIT \$** +430

► **PRODUCTION TRAITS (82% REL)**

Milk	% Fat	Fat	% Protein	Protein
<b>+889 lbs</b>	<b>-0,05</b>	<b>+20</b>	<b>+0,04</b>	<b>+39</b>
K Casein <b>BB</b>		Beta Lactoglobuline <b>AA</b>		Beta Casein <b>A2A2</b>

► **HEALTH TRAITS**

SCS	<b>+2,82</b>	SCE	<b>+1,20</b>
PL	<b>+2,80</b>	DCE	<b>+1,50</b>
DPR	<b>+2,10</b>	FI	<b>+2,10</b>

► **TYPE TRAITS**

PTAT **+0,47**    UDC **+1,01**    FLC **-0,62**

Stature	1,11
Stenght	0,11
Body Dept	-0,11
Dairy Form	0,36
Rump Angle	0,81
Thurl Width	-0,28
Rear Legs-Side	-2,26
Rear Legs-Rear	-0,50
Foot Angle	0,63
Feet & Legs Score	-0,24
F. Udder Attachment	1,12
Rear Udder Height	1,16
Rear Udder Width	1,02
Udder Cleft	1,41
Udder Depth	1,66
Front Teat Placement	1,10
Rear Teat P. Rear	2,16
Teat Lenght	-1,29



Eagle, Go Farm, Casalmoreno CR



GO-FARM  
INSEME

# NOCINO

IT019991856548 - 543HO00228 - aAa 324

SEXED SEMEN *Made in Italy*  
**FOEMINA**  
Sexed **ULTRA**



Go-Farm Inseme Nocino

**TOPNOTCH**

Jedi x Lottomax

**EAGLE**

Go-Farm Natasha  
B+84

**POWERBALL**

DG R Nourya MB85

**TPI**  
**+2305**

**NET MERIT \$**  
**+312**

**CHEESE MERIT \$**  
**+321**

► **PRODUCTION TRAITS** (82% REL)

Milk	% Fat	Fat	% Protein	Protein
<b>+1032 lbs</b>	<b>-0,15</b>	<b>-4</b>	<b>+0,04</b>	<b>+45</b>
K Casein <b>BB</b>		Beta Lactoglobuline <b>AA</b>		Beta Casein <b>A1A2</b>

► **HEALTH TRAITS**

SCS	<b>+2,91</b>	SCE	<b>+1,60</b>
PL	<b>+2,10</b>	DCE	<b>+1,90</b>
DPR	<b>-0,20</b>	FI	<b>-0,10</b>



Eagle Go Farm.Casalmorano CR



► **TYPE TRAITS**

PTAT **+0,90** UDC **+1,11** FLC **-0,48**

Stature				<b>1,23</b>
Stenght				<b>0,43</b>
Body Dept				<b>0,35</b>
Dairy Form				<b>0,63</b>
Rump Angle				<b>-0,32</b>
Thurl Width				<b>-0,14</b>
Rear Legs-Side				<b>-1,35</b>
Rear Legs-Rear				<b>-0,94</b>
Foot Angle				<b>0,91</b>
Feet & Legs Score				<b>0,01</b>
F. Udder Attachment				<b>1,40</b>
Rear Udder Height				<b>1,30</b>
Rear Udder Width				<b>1,51</b>
Udder Cleft				<b>0,98</b>
Udder Depth				<b>1,32</b>
Front Teat Placement				<b>0,61</b>
Rear Teat P. Rear				<b>0,63</b>
Teat Lenght				<b>0,10</b>

**New**

DG

# NORMAN Legend

NL000634724695 -643H005172

SEXED SEMEN *Made in Italy*  
**FOEMINA**  
Sexed **ULTRA 4M**



**CAPTAIN**

Charl x Sabre

**TOPSTONE**

Hul-Stein DG Nellie  
ET

**MEDLEY**

DG HS Nathaly ET

**TPI**  
**+3010**

**NET MERIT \$**  
**+1099**

**CHEESE MERIT \$**  
**+1109**

► **PRODUCTION TRAITS** (80% REL)

Milk	% Fat	Fat	% Protein	Protein
<b>+1652 lbs</b>	<b>+0,18</b>	<b>+117</b>	<b>+0,04</b>	<b>+63</b>
K Casein <b>AB</b>		Beta Lactoglobuline <b>AA</b>		Beta Casein <b>A2A2</b>

► **HEALTH TRAITS**

SCS	<b>+2,85</b>	SCE	<b>+1,40</b>
PL	<b>+4,60</b>	DCE	<b>+1,30</b>
DPR	<b>-0,20</b>	FI	<b>+0,30</b>

► **TYPE TRAITS**

PTAT **+0,35** UDC **+1,44** FLC **+0,32**

Stature				<b>-0,97</b>
Stenght				<b>-1,41</b>
Body Dept				<b>-1,56</b>
Dairy Form				<b>0,43</b>
Rump Angle				<b>0,41</b>
Thurl Width				<b>-0,02</b>
Rear Legs-Side				<b>-0,23</b>
Rear Legs-Rear				<b>0,11</b>
Foot Angle				<b>-0,67</b>
Feet & Legs Score				<b>0,15</b>
F. Udder Attachment				<b>1,15</b>
Rear Udder Height				<b>1,97</b>
Rear Udder Width				<b>1,95</b>
Udder Cleft				<b>0,26</b>
Udder Depth				<b>0,49</b>
Front Teat Placement				<b>0,05</b>
Rear Teat P. Rear				<b>0,34</b>
Teat Lenght				<b>-1,63</b>





New

Polled

DG

# OGLETHORPE

**PLINKO**

Marius x Topshot

X

**HOTSPOT**

Gen Oliva

X

**FINDER**

Col Orlan ET MB85

**TPI**  
+2793

**NET MERIT \$**  
+796

**CHEESE MERIT \$**  
+819

► **PRODUCTION TRAITS (80% REL)**

Milk	% Fat	Fat	% Protein	Protein
<b>+742 lbs</b>	<b>+0,14</b>	<b>+70</b>	<b>+0,11</b>	<b>+54</b>
K Casein <b>BB</b>		Beta Lactoglobuline -		Beta Casein <b>A1A2</b>

► **HEALTH TRAITS**

SCS	<b>+2,77</b>	SCE	<b>+2,00</b>
PL	<b>+4,80</b>	DCE	<b>+2,10</b>
DPR	<b>+0,00</b>	FI	<b>+0,70</b>

DE001406512731 - 643H005158

SEXED SEMEN *Made in Italy*  
**FOEMINA**  
Sexed **ULTRA 4M**



► **TYPE TRAITS**

PTAT **+0,87** UDC **+1,21** FLC **+0,78**

Stature					<b>0,02</b>
Stenght					<b>-0,65</b>
Body Dept					<b>-0,63</b>
Dairy Form					<b>0,35</b>
Rump Angle					<b>0,33</b>
Thurl Width					<b>0,03</b>
Rear Legs-Side					<b>-1,46</b>
Rear Legs-Rear					<b>0,62</b>
Foot Angle					<b>1,03</b>
Feet & Legs Score					<b>0,80</b>
F. Udder Attachment					<b>&gt; 1,83</b>
Rear Udder Height					<b>1,46</b>
Rear Udder Width					<b>1,11</b>
Udder Cleft					<b>-0,40</b>
Udder Depth					<b>&gt; 1,66</b>
Front Teat Placement					<b>-0,58</b>
Rear Teat P. Rear					<b>-0,75</b>
Teat Lenght					<b>0,61</b>



FRIGONI  
INSEME

# PASOLINI

**PADAWAN**

Jedi x Enforcer

X

**GYMNAST**

Frigoni Gymnast B+83

X

**PENMANSHIP**

Agrigen Royal  
Penmanship Tessa B+82

**TPI**  
+2617

**NET MERIT \$**  
+548

**CHEESE MERIT \$**  
+561

► **PRODUCTION TRAITS (81% REL)**

Milk	% Fat	Fat	% Protein	Protein
<b>+1420 lbs</b>	<b>-0,11</b>	<b>+22</b>	<b>+0,05</b>	<b>+59</b>
K Casein <b>AB</b>		Beta Lactoglobuline <b>AA</b>		Beta Casein <b>A2A2</b>

► **HEALTH TRAITS**

SCS	<b>+2,79</b>	SCE	<b>+1,70</b>
PL	<b>+3,30</b>	DCE	<b>+1,70</b>
DPR	<b>+2,90</b>	FI	<b>+3,00</b>



IT020991496723 - 543HO00257 - aAa 342

SEXED SEMEN *Made in Italy*  
**FOEMINA**  
Sexed **ULTRA 4M**



► **TYPE TRAITS**

PTAT **+0,78** UDC **+0,90** FLC **-0,27**

Stature					<b>&gt; 1,53</b>
Stenght					<b>0,60</b>
Body Dept					<b>0,25</b>
Dairy Form					<b>0,54</b>
Rump Angle					<b>0,16</b>
Thurl Width					<b>0,80</b>
Rear Legs-Side					<b>-1,45</b>
Rear Legs-Rear					<b>0,18</b>
Foot Angle					<b>0,71</b>
Feet & Legs Score					<b>0,06</b>
F. Udder Attachment					<b>0,75</b>
Rear Udder Height					<b>1,29</b>
Rear Udder Width					<b>1,45</b>
Udder Cleft					<b>1,43</b>
Udder Depth					<b>1,08</b>
Front Teat Placement					<b>0,53</b>
Rear Teat P. Rear					<b>1,38</b>
Teat Lenght					<b>-0,07</b>



**New**

AL.CO.BIA.  
INSEME

# PECHINO

IT034991319977 - 543HO00301



**PELLEGRINO**

Topnotch x Router

X

**CASPER**

Gioia Inseme  
Edelweiss MB87

X

**MODESTY**

Holbra Malana-ET  
MB7

**TPI**

**+2603**

**NET MERIT \$**

**+487**

**CHEESE MERIT \$**

**+497**

► **PRODUCTION TRAITS (79% REL)**

Milk	% Fat	Fat	% Protein	Protein
<b>+670 lbs</b>	<b>+0,04</b>	<b>+37</b>	<b>+0,04</b>	<b>+31</b>
K Casein <b>AB</b>		Beta Lactoglobuline <b>BB</b>		Beta Casein <b>A1A2</b>

► **HEALTH TRAITS**

SCS	<b>+2,83</b>	SCE	<b>+1,90</b>
PL	<b>+3,10</b>	DCE	<b>+1,60</b>
DPR	<b>+0,60</b>	FI	<b>+0,60</b>



Gioia Inseme Edelweiss ET - Dam of Portofino

► **TYPE TRAITS**

PTAT **+1,70** UDC **+2,63** FLC **+0,53**

Stature	>	<b>1,81</b>
Stenght	>	<b>-0,03</b>
Body Dept	>	<b>-0,13</b>
Dairy Form	>	<b>0,52</b>
Rump Angle	>	<b>0,13</b>
Thurl Width	>	<b>0,12</b>
Rear Legs-Side	>	<b>-0,05</b>
Rear Legs-Rear	>	<b>0,07</b>
Foot Angle	>	<b>1,07</b>
Feet & Legs Score	>	<b>1,08</b>
F. Udder Attachment	>	<b>3,39</b>
Rear Udder Height	>	<b>3,27</b>
Rear Udder Width	>	<b>2,39</b>
Udder Cleft	>	<b>1,58</b>
Udder Depth	>	<b>3,49</b>
Front Teat Placement	>	<b>0,66</b>
Rear Teat P. Rear	>	<b>0,82</b>
Teat Lenght	>	<b>-0,23</b>

AL.CO.BIA.  
INSEME

# PORTOFINO

IT034991251191 - 543HO00279 - aAa 234

SEXED SEMEN *Made in Italy*  
**FOEMINA**  
Sexed **ULTRA 4M**



AL.CO.BIA. Inseme Portofino

**KUDOS**

Topnotch x Jedi

X

**CASPER**

Gioia Inseme  
Edelweiss MB85

X

**MODESTY**

Holbra Malana B+83

**TPI**

**+2757**

**NET MERIT \$**

**+577**

**CHEESE MERIT \$**

**+591**

► **PRODUCTION TRAITS (81% REL)**

Milk	% Fat	Fat	% Protein	Protein
<b>+1386 lbs</b>	<b>+0,01</b>	<b>+57</b>	<b>+0,06</b>	<b>+61</b>
K Casein <b>BB</b>		Beta Lactoglobuline <b>AB</b>		Beta Casein <b>A1A2</b>

► **HEALTH TRAITS**

SCS	<b>+2,85</b>	SCE	<b>+2,20</b>
PL	<b>+1,70</b>	DCE	<b>+1,80</b>
DPR	<b>-1,40</b>	FI	<b>-0,90</b>



Gioia Inseme Edelweiss ET - Dam of Portofino

► **TYPE TRAITS**

PTAT **+2,39** UDC **+2,45** FLC **+0,41**

Stature	>	<b>2,79</b>
Stenght	>	<b>1,28</b>
Body Dept	>	<b>1,44</b>
Dairy Form	>	<b>1,75</b>
Rump Angle	>	<b>0,27</b>
Thurl Width	>	<b>1,29</b>
Rear Legs-Side	>	<b>0,37</b>
Rear Legs-Rear	>	<b>0,18</b>
Foot Angle	>	<b>1,59</b>
Feet & Legs Score	>	<b>1,15</b>
F. Udder Attachment	>	<b>3,36</b>
Rear Udder Height	>	<b>3,06</b>
Rear Udder Width	>	<b>3,01</b>
Udder Cleft	>	<b>2,40</b>
Udder Depth	>	<b>2,90</b>
Front Teat Placement	>	<b>1,46</b>
Rear Teat P. Rear	>	<b>2,03</b>
Teat Lenght	>	<b>-0,19</b>



IDEVRA ROYAL

# PUCCINI

IT019991816277 - 543HO00230 - aAa 234



**PADAWAN**

**OCTAVIAN**

**DOORMAN**

Jedi x Enforcer

x

Idevra Royal Pepsi MB85

x

Muri Doorman Trissy B+84

**TPI**  
**+2528**

**NET MERIT \$**  
**+457**

**CHEESE MERIT \$**  
**+473**

► **PRODUCTION TRAITS** (82% REL)

Milk <b>+725 lbs</b>	% Fat <b>+0</b>	Fat <b>+27</b>	% Protein <b>+0,07</b>	Protein <b>+42</b>
K Casein <b>AB</b>		Beta Lactoglobuline <b>AB</b>		Beta Casein <b>A2A2</b>

► **HEALTH TRAITS**

SCS	<b>+2,77</b>	SCE	<b>+2,30</b>
PL	<b>+3,10</b>	DCE	<b>+2,00</b>
DPR	<b>+1,10</b>	FI	<b>+1,60</b>



► **TYPE TRAITS**

PTAT **+1,06** UDC **+0,94** FLC **+0,12**

Stature	1,48
Stenght	1,22
Body Dept	0,94
Dairy Form	0,82
Rump Angle	-0,70
Thurl Width	1,38
Rear Legs-Side	-0,43
Rear Legs-Rear	0,48
Foot Angle	0,44
Feet & Legs Score	0,42
F. Udder Attachment	1,39
Rear Udder Height	1,21
Rear Udder Width	1,37
Udder Cleft	0,91
Udder Depth	1,25
Front Teat Placement	0,26
Rear Teat P. Rear	0,80
Teat Lenght	-0,50

IDEVRA ROYAL INSEME

# ROSSINI

IT019991894402 - 543HO00248 - aAa 234



**HOTHAND**

**BANDARES**

**RODANAS**

Hotline x Montroos

x

Inseme Aritmia B+83

x

Vermunt

**TPI**  
**+2609**

**NET MERIT \$**  
**+581**

**CHEESE MERIT \$**  
**+603**

► **PRODUCTION TRAITS** (81% REL)

Milk <b>+808 lbs</b>	% Fat <b>+0,05</b>	Fat <b>+45</b>	% Protein <b>+0,1</b>	Protein <b>+53</b>
K Casein <b>AA</b>		Beta Lactoglobuline <b>AA</b>		Beta Casein <b>A1A2</b>

► **HEALTH TRAITS**

SCS	<b>+2,69</b>	SCE	<b>+1,80</b>
PL	<b>+2,20</b>	DCE	<b>+2,20</b>
DPR	<b>-1,00</b>	FI	<b>-0,80</b>

► **TYPE TRAITS**

PTAT **+1,44** UDC **+1,60** FLC **+0,30**

Stature	1,22
Stenght	0,35
Body Dept	0,34
Dairy Form	1,23
Rump Angle	1,12
Thurl Width	-0,01
Rear Legs-Side	-0,64
Rear Legs-Rear	0,92
Foot Angle	1,19
Feet & Legs Score	0,40
F. Udder Attachment	1,90
Rear Udder Height	2,46
Rear Udder Width	2,24
Udder Cleft	0,65
Udder Depth	1,40
Front Teat Placement	0,21
Rear Teat P. Rear	-0,05
Teat Lenght	-0,16





SCOTTA  
INSEME

## SALUZZO

IT004992425480 - 543HO00300

SEXED SEMEN *Made in Italy*  
**FOEMINA**  
Sexed **ULTRA 4M**

## PLINKO

Marius x Topshot

## DATALINE

Scotta Inseme Ceffs  
ET MB86

## SUPERSTAR

Zaqqqa MB85

TPI  
**+2779**NET MERIT \$  
**+850**CHEESE MERIT \$  
**+873**

Scotta Inseme Saluzzo

## ► PRODUCTION TRAITS (80% REL)

Milk	% Fat	Fat	% Protein	Protein
<b>+1263 lbs</b>	<b>+0,09</b>	<b>+75</b>	<b>+0,08</b>	<b>+62</b>
K Casein <b>AA</b>		Beta Lactoglobuline <b>AB</b>		Beta Casein <b>A2A2</b>

## ► HEALTH TRAITS

SCS	<b>+2,55</b>	SCE	<b>+1,50</b>
PL	<b>+4,40</b>	DCE	<b>+1,40</b>
DPR	<b>-0,20</b>	FI	<b>+0,30</b>



Zaqqqa



## ► TYPE TRAITS

PTAT **+0,17** UDC **+0,36** FLC **-0,47**

Stature				<b>0,64</b>
Stenght				<b>-0,31</b>
Body Dept				<b>-0,14</b>
Dairy Form				<b>1,15</b>
Rump Angle				<b>1,85</b>
Thurl Width				<b>0,12</b>
Rear Legs-Side				<b>-1,05</b>
Rear Legs-Rear				<b>-0,51</b>
Foot Angle				<b>-0,23</b>
Feet & Legs Score				<b>-0,21</b>
F. Udder Attachment				<b>0,07</b>
Rear Udder Height				<b>0,68</b>
Rear Udder Width				<b>1,02</b>
Udder Cleft				<b>0,56</b>
Udder Depth				<b>0,19</b>
Front Teat Placement				<b>-0,02</b>
Rear Teat P. Rear				<b>0,19</b>
Teat Lenght				<b>0,28</b>

-0,5 0 +0,5 +1 +1,5

DG DV  
INSEME  
SANZIO

## SANZIO

NL000621264063 - 543HO00232

## CLASSIC

Charley x Silver

## JEDI

Montross x Supersire

## KINGBOY

McCutchen x Super

TPI  
**+2670**NET MERIT \$  
**+753**CHEESE MERIT \$  
**+767**

DG DV Inseme Sanzio

## ► PRODUCTION TRAITS (80% REL)

Milk	% Fat	Fat	% Protein	Protein
<b>+1179 lbs</b>	<b>+0,07</b>	<b>+65</b>	<b>+0,05</b>	<b>+51</b>
K Casein <b>AA</b>		Beta Lactoglobuline <b>AA</b>		Beta Casein <b>A1A2</b>

## ► HEALTH TRAITS

SCS	<b>+2,74</b>	SCE	<b>+2,00</b>
PL	<b>+3,40</b>	DCE	<b>+2,30</b>
DPR	<b>-1,40</b>	FI	<b>-1,00</b>

## ► TYPE TRAITS

PTAT **+0,74** UDC **+1,35** FLC **+0,21**

Stature				<b>0,08</b>
Stenght				<b>-0,73</b>
Body Dept				<b>-0,50</b>
Dairy Form				<b>0,73</b>
Rump Angle				<b>0,29</b>
Thurl Width				<b>-0,40</b>
Rear Legs-Side				<b>-1,39</b>
Rear Legs-Rear				<b>0,07</b>
Foot Angle				<b>0,80</b>
Feet & Legs Score				<b>0,27</b>
F. Udder Attachment				<b>1,05</b>
Rear Udder Height				<b>1,92</b>
Rear Udder Width				<b>1,47</b>
Udder Cleft				<b>1,27</b>
Udder Depth				<b>0,99</b>
Front Teat Placement				<b>0,94</b>
Rear Teat P. Rear				<b>1,50</b>
Teat Lenght				<b>-1,52</b>

-0,5 0 +0,5 +1 +1,5

GO-FARM **SCANSANO**

IT019991766043 - 543HO00210 - aAa 423516



**PADAWAN** x **RUBICON** x **BALISTO**  
 Jedi x Enforcer x Sfh Saphir B+84 x Kns Sinballi EX90

**TPI** +2596    **NET MERIT \$** +628    **CHEESE MERIT \$** +639

► **PRODUCTION TRAITS (81% REL)**

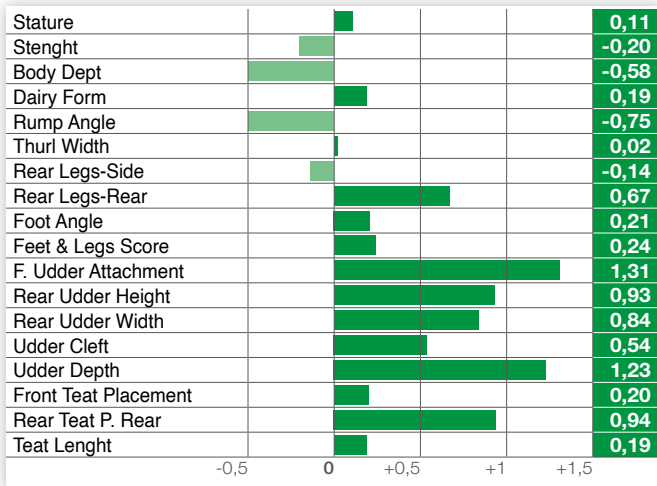
Milk	% Fat	Fat	% Protein	Protein
<b>+1189 lbs</b>	<b>-0,06</b>	<b>+28</b>	<b>+0,04</b>	<b>+50</b>
K Casein <b>BB</b>		Beta Lactoglobuline <b>AA</b>		Beta Casein <b>A2A2</b>

► **HEALTH TRAITS**

SCS	<b>+2,87</b>	SCE	<b>+2,20</b>
PL	<b>+4,70</b>	DCE	<b>+1,60</b>
DPR	<b>+1,20</b>	FI	<b>+1,70</b>

► **TYPE TRAITS**

PTAT **+0,50**    UDC **+1,04**    FLC **+0,33**



GO-FARM **SILLA**

IT019991792584 - 543HO00234 - aAa 234



**SOUND SYSTEM** x **FRANCHISE** x **SPEAKER**  
 Silver x Supersire x Go-Farm Shanghai MB87 x Go-Farm Saphira B+84

**TPI** +2617    **NET MERIT \$** +578    **CHEESE MERIT \$** +588

► **PRODUCTION TRAITS (81% REL)**

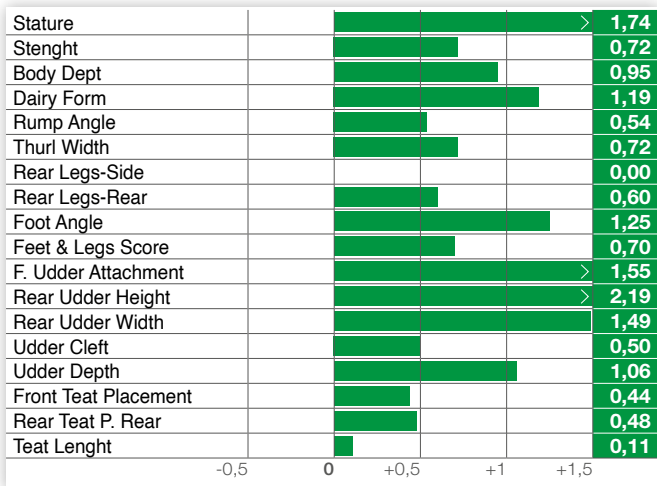
Milk	% Fat	Fat	% Protein	Protein
<b>+856 lbs</b>	<b>+0,09</b>	<b>+60</b>	<b>+0,05</b>	<b>+40</b>
K Casein <b>BE</b>		Beta Lactoglobuline <b>AA</b>		Beta Casein <b>A1A2</b>

► **HEALTH TRAITS**

SCS	<b>+2,90</b>	SCE	<b>+2,20</b>
PL	<b>+2,30</b>	DCE	<b>+1,90</b>
DPR	<b>-0,20</b>	FI	<b>+0,40</b>

► **TYPE TRAITS**

PTAT **+1,16**    UDC **+1,13**    FLC **+0,37**



ISOLABELLA  
INSEME

## SONIK

IT001991379357 - 543HO00289 - aAa 243

SEXED SEMEN *Made in Italy*  
**FOEMINA**  
Sexed **ULTRA 4M****MACHONE**  
Milktime x Romero**SOUNDSYSTEM**  
Baruf Inseme S.S.  
Sunrise B+84**FONTAINE**  
Baruf Fontaine  
Sunrise MB87**TPI**  
**+2714****NET MERIT \$**  
**+674****CHEESE MERIT \$**  
**+688**

## ► PRODUCTION TRAITS (79% REL)

Milk	% Fat	Fat	% Protein	Protein
<b>+1088 lbs</b>	<b>+0,11</b>	<b>+74</b>	<b>+0,07</b>	<b>+53</b>
K Casein <b>AB</b>		Beta Lactoglobuline <b>AA</b>		Beta Casein <b>A2A2</b>

## ► HEALTH TRAITS

SCS	<b>+2,84</b>	SCE	<b>+2,40</b>
PL	<b>+2,00</b>	DCE	<b>+2,60</b>
DPR	<b>-1,50</b>	FI	<b>-1,00</b>



## ► TYPE TRAITS

PTAT **+1,72** UDC **+1,72** FLC **-0,09**

Stature	1,39
Stenght	0,48
Body Dept	0,91
Dairy Form	2,25
Rump Angle	-0,02
Thurl Width	1,36
Rear Legs-Side	0,61
Rear Legs-Rear	0,37
Foot Angle	0,30
Feet & Legs Score	0,18
F. Udder Attachment	1,72
Rear Udder Height	2,50
Rear Udder Width	2,46
Udder Cleft	1,48
Udder Depth	1,28
Front Teat Placement	1,23
Rear Teat P. Rear	1,41
Teat Lenght	-0,39

MOLINADAIRY  
INSEME

## SPRINTER

IT098990800801 - 543HO00274 - aAa 243

**SOLUTION**  
Frazzled x Rubicon**SOUND SYSTEM**  
Molinadairy  
Macciaapua B+83**GAMBLER**  
Molinadairy Lella  
MB86**TPI**  
**+2540****NET MERIT \$**  
**+595****CHEESE MERIT \$**  
**+604**

## ► PRODUCTION TRAITS (81% REL)

Milk	% Fat	Fat	% Protein	Protein
<b>+868 lbs</b>	<b>+0,04</b>	<b>+44</b>	<b>+0,03</b>	<b>+35</b>
K Casein <b>BB</b>		Beta Lactoglobuline <b>AB</b>		Beta Casein <b>A2A2</b>

## ► HEALTH TRAITS

SCS	<b>+2,78</b>	SCE	<b>+2,50</b>
PL	<b>+4,70</b>	DCE	<b>+1,90</b>
DPR	<b>-0,50</b>	FI	<b>+0,00</b>

## ► TYPE TRAITS

PTAT **+0,57** UDC **+1,21** FLC **-0,16**

Stature	0,63
Stenght	-0,58
Body Dept	-1,07
Dairy Form	-0,55
Rump Angle	1,58
Thurl Width	0,30
Rear Legs-Side	0,11
Rear Legs-Rear	-0,63
Foot Angle	0,89
Feet & Legs Score	0,10
F. Udder Attachment	2,02
Rear Udder Height	1,07
Rear Udder Width	0,34
Udder Cleft	0,78
Udder Depth	2,28
Front Teat Placement	1,76
Rear Teat P. Rear	1,54
Teat Lenght	-1,70





IT017992167089 - 543HO00237 - aAa 243165



ZANI INSEME

# STRADIVARI

**DREAM**

Expresso x Montross

**SOUND SYSTEM**

Zani Soundsystem  
Nora MB85

**OCTAVIAN**

Zani Octavian Noemy  
MB88



Zani Inseme Stradivari

**TPI**  
**+2621**

**NET MERIT \$**  
**+493**

**CHEESE MERIT \$**  
**+511**

► **PRODUCTION TRAITS (81% REL)**

Milk	% Fat	Fat	% Protein	Protein
<b>+785 lbs</b>	<b>+0,05</b>	<b>+45</b>	<b>+0,08</b>	<b>+48</b>
K Casein <b>BB</b>		Beta Lactoglobuline <b>AA</b>		Beta Casein <b>A1A1</b>

► **HEALTH TRAITS**

SCS	<b>+2,79</b>	SCE	<b>+2,40</b>
PL	<b>+2,20</b>	DCE	<b>+2,30</b>
DPR	<b>+0,70</b>	FI	<b>+1,00</b>



Group Zani

► **TYPE TRAITS**

PTAT **+1,31** UDC **+1,39** FLC **+0,11**

Stature	2,20
Stenght	1,27
Body Dept	0,60
Dairy Form	0,07
Rump Angle	-0,10
Thurl Width	0,83
Rear Legs-Side	-1,02
Rear Legs-Rear	0,42
Foot Angle	2,08
Feet & Legs Score	0,53
F. Udder Attachment	2,33
Rear Udder Height	2,36
Rear Udder Width	1,49
Udder Cleft	0,15
Udder Depth	2,64
Front Teat Placement	-0,63
Rear Teat P. Rear	-0,77
Teat Lenght	0,72

-0,5 0 +0,5 +1 +1,5

MIRABELL  
INSEME

# SUPERFAST

IT917992526791 - 543HO00287 - aAa 234

**MOTIVATED**

Padawan x Duke

**TOPNOTCH**

Mirabell TPCH Story

**MONTEREY**

Mirabell MNTR Sulley  
MB86



Mirabell Inseme Superfast

**TPI**  
**+2768**

**NET MERIT \$**  
**+753**

**CHEESE MERIT \$**  
**+772**

► **PRODUCTION TRAITS (81% REL)**

Milk	% Fat	Fat	% Protein	Protein
<b>+1306 lbs</b>	<b>+0,07</b>	<b>+72</b>	<b>+0,09</b>	<b>+66</b>
K Casein <b>BE</b>		Beta Lactoglobuline <b>AB</b>		Beta Casein <b>A1A1</b>

► **HEALTH TRAITS**

SCS	<b>+2,79</b>	SCE	<b>+2,20</b>
PL	<b>+3,60</b>	DCE	<b>+2,50</b>
DPR	<b>-0,90</b>	FI	<b>-0,30</b>

► **TYPE TRAITS**

PTAT **+1,34** UDC **+0,92** FLC **-0,25**

Stature	1,28
Stenght	0,62
Body Dept	0,93
Dairy Form	1,93
Rump Angle	-0,70
Thurl Width	1,09
Rear Legs-Side	0,45
Rear Legs-Rear	-0,51
Foot Angle	0,05
Feet & Legs Score	0,21
F. Udder Attachment	0,89
Rear Udder Height	1,70
Rear Udder Width	2,02
Udder Cleft	0,90
Udder Depth	0,47
Front Teat Placement	-0,06
Rear Teat P. Rear	0,33
Teat Lenght	0,84

-0,5 0 +0,5 +1 +1,5

New

DG

SUVAN

Legend

CAPTAIN

CHARL

JEDI

Charl x Sabre

X

RGD Sunga ET

Sheaola Jedi 6071-ET

TPI  
+3098NET MERIT \$  
+1179CHEESE MERIT \$  
+1192

## ► PRODUCTION TRAITS (81% REL)

Milk	% Fat	Fat	% Protein	Protein
+1444 lbs	+0,22	+119	+0,04	+58
K Casein AA		Beta Lactoglobuline AA		Beta Casein A2A2

## ► HEALTH TRAITS

SCS	+2,79	SCE	+2,10
PL	+6,00	DCE	+2,10
DPR	+1,90	FI	+2,60

NL000575219715 - 643H005160

SEXED SEMEN *Made in Italy*  
**FOEMINA**  
Sexed **ULTRA 4M**

## ► TYPE TRAITS

PTAT +0,69 UDC +1,01 FLC +0,65

Stature	-0,79
Stenght	-1,47
Body Dept	-1,16
Dairy Form	1,04
Rump Angle	0,30
Thurl Width	-0,31
Rear Legs-Side	-0,20
Rear Legs-Rear	0,37
Foot Angle	-0,71
Feet & Legs Score	0,54
F. Udder Attachment	0,72
Rear Udder Height	1,74
Rear Udder Width	1,34
Udder Cleft	0,07
Udder Depth	0,05
Front Teat Placement	0,23
Rear Teat P. Rear	0,46
Teat Lenght	-1,73

SABBIONA  
INSEME

TANTUM

IT098990744592 - 543HO00249 - aAa 234

SEXED SEMEN *Made in Italy*  
**FOEMINA**  
Sexed **ULTRA 4M**

Sabbiona Inseme Tantum

DISCJOCKEY

APPLICABLE

MASCALESE

Fortune x Monterey

X

Sabbiona Tania EX92

X

Go-Farm Tashira  
MB89TPI  
+2224NET MERIT \$  
+36CHEESE MERIT \$  
+49

## ► PRODUCTION TRAITS (82% REL)

Milk	% Fat	Fat	% Protein	Protein
-440 lbs	+0,05	-4	+0,07	+6
K Casein AE		Beta Lactoglobuline AA		Beta Casein A1A1

## ► HEALTH TRAITS

SCS	+2,87	SCE	+2,80
PL	+1,00	DCE	+2,40
DPR	+0,00	FI	+0,10



Sabbiona (Ciserani) Applicable (VP)

## ► TYPE TRAITS

PTAT +1,75 UDC +2,67 FLC +0,32

Stature	2,60
Stenght	1,11
Body Dept	0,41
Dairy Form	-0,61
Rump Angle	0,48
Thurl Width	1,30
Rear Legs-Side	-2,40
Rear Legs-Rear	1,36
Foot Angle	2,67
Feet & Legs Score	0,70
F. Udder Attachment	3,64
Rear Udder Height	3,36
Rear Udder Width	1,88
Udder Cleft	1,83
Udder Depth	4,54
Front Teat Placement	0,97
Rear Teat P. Rear	1,13
Teat Lenght	-0,57

CORVINI TELESFORO **TELESFORO**

IT098990685193 - 543HO00235 - aAa 243



**SOUND SYSTEM** **DERWOOD** **DEMPSEY**  
 Silver x Supersire x Doorman x Man-Oman x Goldwyn x Derry

**TPI** +2513    **NET MERIT \$** +449    **CHEESE MERIT \$** +460

► **PRODUCTION TRAITS (81% REL)**

Milk	% Fat	Fat	% Protein	Protein
<b>+915 lbs</b>	<b>+0,03</b>	<b>+45</b>	<b>+0,08</b>	<b>+51</b>
K Casein <b>BE</b>		Beta Lactoglobuline <b>AA</b>		Beta Casein <b>A1A2</b>

► **HEALTH TRAITS**

SCS	<b>+3,10</b>	SCE	<b>+2,30</b>
PL	<b>+0,40</b>	DCE	<b>+2,50</b>
DPR	<b>-1,20</b>	FI	<b>-0,80</b>

► **TYPE TRAITS**

PTAT **+1,60**    UDC **+1,68**    FLC **+0,34**

Stature	1,26
Stenght	0,60
Body Dept	1,01
Dairy Form	1,97
Rump Angle	-0,57
Thurl Width	0,72
Rear Legs-Side	1,12
Rear Legs-Rear	0,43
Foot Angle	0,67
Feet & Legs Score	0,66
F. Udder Attachment	1,47
Rear Udder Height	2,91
Rear Udder Width	2,52
Udder Cleft	1,33
Udder Depth	0,73
Front Teat Placement	0,96
Rear Teat P. Rear	1,27
Teat Lenght	-0,32

PISCHI INSEME **TIALOCO**

IT016990900821 - 543HO00295 - aAa 153



**MACHONE** **REDROCK** **VANHALEN**  
 Milktime x Romero x Inseme Clara MB86 x Vanhalen MB87

**TPI** +2719    **NET MERIT \$** +692    **CHEESE MERIT \$** +707

► **PRODUCTION TRAITS (79% REL)**

Milk	% Fat	Fat	% Protein	Protein
<b>+1073 lbs</b>	<b>-0,05</b>	<b>+27</b>	<b>+0,03</b>	<b>+41</b>
K Casein <b>BB</b>		Beta Lactoglobuline <b>AA</b>		Beta Casein <b>A1A2</b>

► **HEALTH TRAITS**

SCS	<b>+2,51</b>	SCE	<b>+1,60</b>
PL	<b>+6,00</b>	DCE	<b>+1,50</b>
DPR	<b>+1,90</b>	FI	<b>+1,90</b>

► **TYPE TRAITS**

PTAT **+1,64**    UDC **+2,02**    FLC **-0,03**

Stature	1,17
Stenght	0,32
Body Dept	0,47
Dairy Form	1,23
Rump Angle	1,33
Thurl Width	0,44
Rear Legs-Side	-1,19
Rear Legs-Rear	0,02
Foot Angle	0,66
Feet & Legs Score	0,29
F. Udder Attachment	2,43
Rear Udder Height	2,54
Rear Udder Width	2,38
Udder Cleft	1,31
Udder Depth	1,92
Front Teat Placement	1,13
Rear Teat P. Rear	0,32
Teat Lenght	0,01



SABBIONA  
INSEME

## TSUNAMI

**KONRAD**

Hotjob x Jedi

**DISCJOCKEY**

Sabbiona Magic MB86

**APPLICABLE**

Sabbiona Tania EX92

**TPI**  
**+2504****NET MERIT \$**  
**+293****CHEESE MERIT \$**  
**+313**

## ► PRODUCTION TRAITS (79% REL)

Milk	% Fat	Fat	% Protein	Protein
<b>-78 lbs</b>	<b>+0,09</b>	<b>+23</b>	<b>+0,1</b>	<b>+25</b>
K Casein <b>AB</b>		Beta Lactoglobuline <b>AB</b>		Beta Casein <b>A1A1</b>

## ► HEALTH TRAITS

SCS	<b>+2,78</b>	SCE	<b>+2,30</b>
PL	<b>+2,60</b>	DCE	<b>+2,50</b>
DPR	<b>+0,40</b>	FI	<b>+0,70</b>

IT098990806252 - 543HO00288



Sabbiona Inseme Tsunami

## ► TYPE TRAITS

PTAT **+2,35** UDC **+2,71** FLC **+0,08**

Stature	>	3,00
Stenght	>	1,81
Body Dept		1,25
Dairy Form		0,20
Rump Angle		-0,29
Thurl Width		1,27
Rear Legs-Side		-2,26
Rear Legs-Rear		0,95
Foot Angle	>	2,30
Feet & Legs Score		0,65
F. Udder Attachment	>	3,63
Rear Udder Height	>	3,65
Rear Udder Width	>	2,99
Udder Cleft	>	1,58
Udder Depth	>	3,82
Front Teat Placement	>	1,54
Rear Teat P. Rear	>	1,55
Teat Lenght		-0,83

-0,5 0 +0,5 +1 +1,5

DELLAROSSA  
INSEME

## WODOO

**ZAZZLE**

Marius x Topshot

**ACHIEVER**Juniper-Jlc Achievr  
Wish-ET**DELTA**Ttm Delta Wonder  
Woman-ET MB88**TPI**  
**+2836****NET MERIT \$**  
**+882****CHEESE MERIT \$**  
**+891**

## ► PRODUCTION TRAITS (81% REL)

Milk	% Fat	Fat	% Protein	Protein
<b>+1171 lbs</b>	<b>+0,22</b>	<b>+110</b>	<b>+0,04</b>	<b>+47</b>
K Casein <b>BE</b>		Beta Lactoglobuline <b>AB</b>		Beta Casein <b>A1A1</b>

## ► HEALTH TRAITS

SCS	<b>+2,88</b>	SCE	<b>+1,90</b>
PL	<b>+2,40</b>	DCE	<b>+1,80</b>
DPR	<b>-2,40</b>	FI	<b>-1,70</b>

IT004992267916 - 543HO00299 - aAa 234

SEXED SEMEN *Made in Italy*  
**FOEMINA**  
Sexed **ULTRA 4M**

Dellarossa Inseme Woodoo

## ► TYPE TRAITS

PTAT **+1,49** UDC **+1,59** FLC **-0,05**

Stature		0,81
Stenght		-0,36
Body Dept		0,45
Dairy Form	>	2,57
Rump Angle		0,38
Thurl Width		0,51
Rear Legs-Side		0,96
Rear Legs-Rear		-0,42
Foot Angle		-0,16
Feet & Legs Score		0,33
F. Udder Attachment	>	1,63
Rear Udder Height	>	2,27
Rear Udder Width	>	2,40
Udder Cleft		0,81
Udder Depth		0,84
Front Teat Placement		1,33
Rear Teat P. Rear		1,37
Teat Lenght		-0,68

-0,5 0 +0,5 +1 +1,5



New

AIMONETTA

# ZELDA P

IT006990164636 - 543H06436



**STAR P RF** × **ALTASTARJACK** × **BLOWTORCH**  
 Solitair P x Semino × Aimonetta ET GP81 × Claytop All My Love-ET

**TPI** +2792      **NET MERIT \$** +835      **CHEESE MERIT \$** +851

▶ PRODUCTION TRAITS (81% REL)				
Milk	% Fat	Fat	% Protein	Protein
<b>+1028 lbs</b>	<b>+0,07</b>	<b>+61</b>	<b>+0,06</b>	<b>+50</b>
K Casein <b>BB</b>		Beta Lactoglobuline <b>AA</b>		Beta Casein <b>A1A2</b>

▶ HEALTH TRAITS			
SCS	<b>+5,74</b>	SCE	<b>+1,40</b>
PL	<b>+5,00</b>	DCE	<b>+2,20</b>
DPR	<b>+1,40</b>	FI	<b>+1,40</b>

▶ TYPE TRAITS			
PTAT	<b>+0,91</b>	UDC	<b>+1,08</b>
		FLC	<b>+1,24</b>

Stature				<b>0,02</b>
Stenght				<b>-0,09</b>
Body Dept				<b>0,31</b>
Dairy Form				<b>0,27</b>
Rump Angle				<b>-0,59</b>
Thurl Width				<b>-0,19</b>
Rear Legs-Side				<b>-0,79</b>
Rear Legs-Rear				<b>1,32</b>
Foot Angle				<b>1,03</b>
Feet & Legs Score				<b>1,14</b>
F. Udder Attachment				<b>1,50</b>
Rear Udder Height				<b>1,65</b>
Rear Udder Width				<b>0,86</b>
Udder Cleft				<b>-0,36</b>
Udder Depth				<b>1,11</b>
Front Teat Placement				<b>-0,21</b>
Rear Teat P. Rear				<b>-0,49</b>
Teat Length				<b>-0,16</b>



## RED AND RF TOP 10

Naab Code	Name	Sire	Mgs	A2A2	KBB	GPFT	TPI	Net Merit	Milk (lbs)	Fat (lbs)	Fat %	Pr (lbs)	Pr %	SCS	PL	DPR	SCE	PTAT	UDC	FLC
543H000292	King Red P	Gio P	Gywer Rdc	A2A2		4822	<b>2730</b>	696	935	50	0,05	45	0,06	2,72	4,5	1,4	1,3	0,99	1,25	1,41
543H000253	Appius Red	Solitair P Red	Apprentice *RC			4068	<b>2691</b>	809	670	44	0,06	43	0,08	2,82	6,0	1,0	1,3	0,37	1,08	1,32
543H000255	Alcerosso	Solitair P Red				3804	<b>2677</b>	791	1184	69	0,08	54	0,06	2,91	4,0	-1,2	1,7	0,89	0,97	0,39
543H000306	Athos Red	Freestyle	Gywer Rdc			4347	<b>2676</b>	730	961	45	0,03	34	0,01	2,63	6,3	1,5	1,1	0,54	1,10	1,08
543H000282	Wally Red P	Solitair P Red	Abi Red	A2A2	BB	3832	<b>2646</b>	698	913	69	0,12	45	0,06	3,02	3,3	-2,0	1,6	1,13	1,30	0,88
543H000272	Kyrios RC	Stradivari	Spark Red			4472	<b>2628</b>	539	1449	21	-0,12	44	0,00	2,61	4,8	1,5	1,8	1,44	1,36	0,61
543H000275	Diavolo Rosso	Barone Rosso	Gywer Rdc	A2A2		4095	<b>2603</b>	542	1138	53	0,03	49	0,05	2,75	2,2	1,6	1,5	0,79	0,44	0,01
543H000271	Ritmo RC	Ronald	Achiever		BB	4207	<b>2593</b>	555	635	57	0,11	34	0,05	2,78	2,8	-1,5	2,1	1,47	1,82	0,50
543H000219	Barone Rosso	Santorius	Breaker		BB	3793	<b>2556</b>	459	1022	49	0,03	51	0,07	2,85	1,4	-1,1	2,0	1,49	1,42	0,21
543H000246	Sogno Rosso	Lucky PP-RED	Kingboy	A2A2		3357	<b>2310</b>	311	-83	22	0,09	16	0,07	2,67	2,8	-0,2	2,0	0,71	0,87	0,29

USDA 04/2023



# A RED dream

**Polled**

IT017992284863 - 543HO00255 - aAa 342

SEXED SEMEN *Made in Italy*  
**FOEMINA**  
Sexed **ULTRA**

ZANI INSEME

**ALCEROSSO PR****SOLITAIR P**

Mr Salvatore x Balisto

**MISSION P**Zani Mission P  
Ramina MB85**SILVER**Zani Silver Ambra  
MB86**TPI**  
**+2677****NET MERIT \$**  
**+791****CHEESE MERIT \$**  
**+803**

Zani Inseme Alcerosso

**► PRODUCTION TRAITS (81% REL)**

Milk	% Fat	Fat	% Protein	Protein
<b>+1184 lbs</b>	<b>+0,08</b>	<b>+69</b>	<b>+0,06</b>	<b>+54</b>
K Casein <b>AB</b>		Beta Lactoglobuline <b>AA</b>		Beta Casein <b>A1A2</b>

**► HEALTH TRAITS**

SCS	<b>+2,91</b>	SCE	<b>+1,70</b>
PL	<b>+4,00</b>	DCE	<b>+2,40</b>
DPR	<b>-1,20</b>	FI	<b>-1,00</b>

**► TYPE TRAITS**

PTAT **+0,89** UDC **+0,97** FLC **+0,39**

Stature				<b>0,28</b>
Stenght				<b>-0,49</b>
Body Dept				<b>-0,07</b>
Dairy Form				<b>1,50</b>
Rump Angle				<b>-0,12</b>
Thurl Width				<b>0,17</b>
Rear Legs-Side				<b>1,04</b>
Rear Legs-Rear				<b>0,50</b>
Foot Angle				<b>0,09</b>
Feet & Legs Score				<b>0,46</b>
F. Udder Attachment				<b>0,74</b>
Rear Udder Height				<b>1,60</b>
Rear Udder Width				<b>1,50</b>
Udder Cleft				<b>0,51</b>
Udder Depth				<b>0,12</b>
Front Teat Placement				<b>0,35</b>
Rear Teat P. Rear				<b>1,12</b>
Teat Lenght				<b>0,04</b>

**Polled**

IT018990237944 - 543HO00253 - aAa 432

SEXED SEMEN *Made in Italy*  
**FOEMINA**  
Sexed **ULTRA 4M**LUIS-OOH  
INSEME**APPIUS RED PR****SOLITAIR P**

Mr Salvatore x Balisto

**APPRENTICE**

Luis-Ooh Suning

**DELTA**Hermosa Delta Luigia  
B+82**TPI**  
**+2691****NET MERIT \$**  
**+809****CHEESE MERIT \$**  
**+825**

Luis-Ooh Inseme Appius Red Cd

**► PRODUCTION TRAITS (81% REL)**

Milk	% Fat	Fat	% Protein	Protein
<b>+670 lbs</b>	<b>+0,06</b>	<b>+44</b>	<b>+0,08</b>	<b>+43</b>
K Casein <b>BE</b>		Beta Lactoglobuline <b>AA</b>		Beta Casein <b>A1A1</b>

**► HEALTH TRAITS**

SCS	<b>+2,82</b>	SCE	<b>+1,30</b>
PL	<b>+6,00</b>	DCE	<b>+1,70</b>
DPR	<b>+1,00</b>	FI	<b>+1,10</b>

**► TYPE TRAITS**

PTAT **+0,37** UDC **+1,08** FLC **+1,32**

Stature				<b>-0,78</b>
Stenght				<b>-1,04</b>
Body Dept				<b>-1,24</b>
Dairy Form				<b>-0,04</b>
Rump Angle				<b>0,20</b>
Thurl Width				<b>0,01</b>
Rear Legs-Side				<b>-0,39</b>
Rear Legs-Rear				<b>1,15</b>
Foot Angle				<b>0,54</b>
Feet & Legs Score				<b>1,07</b>
F. Udder Attachment				<b>1,03</b>
Rear Udder Height				<b>1,17</b>
Rear Udder Width				<b>1,01</b>
Udder Cleft				<b>0,36</b>
Udder Depth				<b>0,64</b>
Front Teat Placement				<b>0,28</b>
Rear Teat P. Rear				<b>0,56</b>
Teat Lenght				<b>-0,80</b>



ISOLABELLA  
INSEME

# ATHOS RED

IT001991454481 - 543HO00306

SEXED SEMEN *Made in Italy*  
**FOEMINA**  
Sexed **ULTRA 4M**

**FREESTYLE-RED**

Gywer x Will Born

**GYWER**

Luis-Ooh Inseme  
Brillante Red

**APPRENTICE**

Luis-Ooh Suning ET

**TPI**  
**+2676**

**NET MERIT \$**  
**+730**

**CHEESE MERIT \$**  
**+741**



Isolabella Inseme Athos Red

► **PRODUCTION TRAITS (78% REL)**

Milk	% Fat	Fat	% Protein	Protein
<b>+961 lbs</b>	<b>+0,03</b>	<b>+45</b>	<b>+0,01</b>	<b>+34</b>
K Casein <b>AA</b>		Beta Lactoglobuline <b>AA</b>		Beta Casein <b>A1A2</b>

► **HEALTH TRAITS**

SCS	<b>+2,63</b>	SCE	<b>+1,10</b>
PL	<b>+6,30</b>	DCE	<b>+1,60</b>
DPR	<b>+1,50</b>	FI	<b>+1,70</b>

► **TYPE TRAITS**

PTAT **+0,54** UDC **+1,10** FLC **+1,08**

Stature				<b>-0,03</b>
Stenght				<b>-0,51</b>
Body Dept				<b>-1,01</b>
Dairy Form				<b>-0,84</b>
Rump Angle				<b>0,11</b>
Thurl Width				<b>-0,74</b>
Rear Legs-Side				<b>-1,42</b>
Rear Legs-Rear				<b>1,27</b>
Foot Angle				<b>1,07</b>
Feet & Legs Score				<b>0,96</b>
F. Udder Attachment				<b>0,94</b>
Rear Udder Height				<b>1,45</b>
Rear Udder Width				<b>0,88</b>
Udder Cleft				<b>0,14</b>
Udder Depth				<b>1,52</b>
Front Teat Placement				<b>0,05</b>
Rear Teat P. Rear				<b>-0,41</b>
Teat Lenght				<b>-0,06</b>

K&L RM  
INSEME

# BARONE ROSSO R

NL000627599682 - 543HO00219 - aAa 342

SEXED SEMEN *Made in Italy*  
**FOEMINA**  
Sexed **ULTRA 4M**

**SANTORIUS**

Jedi x Kingboy

**BREAKER**

K&L RM Soraya

**BREKEM**

Saga

**TPI**  
**+2556**

**NET MERIT \$**  
**+459**

**CHEESE MERIT \$**  
**+473**



K&L RM Inseme Barone Rosso

► **PRODUCTION TRAITS (81% REL)**

Milk	% Fat	Fat	% Protein	Protein
<b>+1022 lbs</b>	<b>+0,03</b>	<b>+49</b>	<b>+0,07</b>	<b>+51</b>
K Casein <b>BB</b>		Beta Lactoglobuline <b>AA</b>		Beta Casein <b>A1A2</b>

► **HEALTH TRAITS**

SCS	<b>+2,85</b>	SCE	<b>+2,00</b>
PL	<b>+1,40</b>	DCE	<b>+2,40</b>
DPR	<b>-1,10</b>	FI	<b>-0,70</b>



Pradazzo Rosy Red

► **TYPE TRAITS**

PTAT **+1,49** UDC **+1,42** FLC **+0,21**

Stature				<b>1,02</b>
Stenght				<b>0,84</b>
Body Dept				<b>0,60</b>
Dairy Form				<b>0,26</b>
Rump Angle				<b>-1,30</b>
Thurl Width				<b>0,51</b>
Rear Legs-Side				<b>-0,79</b>
Rear Legs-Rear				<b>0,49</b>
Foot Angle				<b>1,20</b>
Feet & Legs Score				<b>0,36</b>
F. Udder Attachment				<b>2,18</b>
Rear Udder Height				<b>2,27</b>
Rear Udder Width				<b>1,87</b>
Udder Cleft				<b>0,50</b>
Udder Depth				<b>1,55</b>
Front Teat Placement				<b>-0,54</b>
Rear Teat P. Rear				<b>-0,45</b>
Teat Lenght				<b>1,77</b>

RIOZZO  
INSEME

# DIABOLO ROSSO R

IT015990572116 - 543HO00275 - aAa 234

SEXED SEMEN *Made in Italy*  
**FOEMINA**  
Sexed **ULTRA 4M****BARONE ROSSO**

Santorius x Breaker

**GYWER**

Weh 22611

**KERRIGAN**

Weh Jacky

TPI  
**+2603**NET MERIT \$  
**+542**CHEESE MERIT \$  
**+556**

### ► PRODUCTION TRAITS (79% REL)

Milk	% Fat	Fat	% Protein	Protein
<b>+1138 lbs</b>	<b>+0,03</b>	<b>+53</b>	<b>+0,05</b>	<b>+49</b>
K Casein <b>AB</b>		Beta Lactoglobuline <b>AA</b>		Beta Casein <b>A2A2</b>

### ► HEALTH TRAITS

SCS	<b>+2,75</b>	SCE	<b>+1,50</b>
PL	<b>+2,20</b>	DCE	<b>+2,20</b>
DPR	<b>+1,60</b>	FI	<b>+2,00</b>

### ► TYPE TRAITS

PTAT **+0,79** UDC **+0,44** FLC **+0,01**

Stature				<b>1,03</b>
Stenght				<b>0,78</b>
Body Dept				<b>0,30</b>
Dairy Form				<b>-0,26</b>
Rump Angle				<b>-0,59</b>
Thurl Width				<b>0,07</b>
Rear Legs-Side				<b>-0,65</b>
Rear Legs-Rear				<b>0,27</b>
Foot Angle				<b>0,71</b>
Feet & Legs Score				<b>0,20</b>
F. Udder Attachment				<b>0,97</b>
Rear Udder Height				<b>1,22</b>
Rear Udder Width				<b>1,06</b>
Udder Cleft				<b>-0,36</b>
Udder Depth				<b>0,98</b>
Front Teat Placement				<b>-1,00</b>
Rear Teat P. Rear				<b>-1,27</b>
Teat Lenght				<b>1,92</b>

GEGANIA  
INSEME

# KYRIOS RF

IT028990476890 - 543HO00272 - aAa 243

SEXED SEMEN *Made in Italy*  
**FOEMINA**  
Sexed **ULTRA 4M****STRADIVARI**Dream x Sound  
System**SPARK RED**Prismagen Inseme  
Red-Kiss B+83**BATTLECRY**

WIL K26

TPI  
**+2628**NET MERIT \$  
**+539**CHEESE MERIT \$  
**+547**

### ► PRODUCTION TRAITS (79% REL)

Milk	% Fat	Fat	% Protein	Protein
<b>+1449 lbs</b>	<b>-0,12</b>	<b>+21</b>	<b>+0</b>	<b>+44</b>
K Casein <b>AB</b>		Beta Lactoglobuline <b>AA</b>		Beta Casein <b>A1A2</b>

### ► HEALTH TRAITS

SCS	<b>+2,61</b>	SCE	<b>+1,80</b>
PL	<b>+4,80</b>	DCE	<b>+1,70</b>
DPR	<b>+1,50</b>	FI	<b>+1,60</b>

### ► TYPE TRAITS

PTAT **+1,44** UDC **+1,36** FLC **+0,61**

Stature				<b>2,40</b>
Stenght				<b>0,65</b>
Body Dept				<b>0,22</b>
Dairy Form				<b>0,49</b>
Rump Angle				<b>0,49</b>
Thurl Width				<b>1,38</b>
Rear Legs-Side				<b>-0,75</b>
Rear Legs-Rear				<b>1,08</b>
Foot Angle				<b>2,10</b>
Feet & Legs Score				<b>1,02</b>
F. Udder Attachment				<b>2,07</b>
Rear Udder Height				<b>2,04</b>
Rear Udder Width				<b>1,50</b>
Udder Cleft				<b>0,45</b>
Udder Depth				<b>2,76</b>
Front Teat Placement				<b>0,02</b>
Rear Teat P. Rear				<b>-0,03</b>
Teat Lenght				<b>0,35</b>



**Polled**BAS FARM  
INSEME**KING RED PR**

IT001991441926 - 543HO00292 - aAa 135

SEXED SEMEN *Made in Italy*  
**FOEMINA**  
Sexed **ULTRA 4M**

Bas Farm Inseme Red King PR ET

**GIO P RF**

Gywer x Lighter

**GYWER**

Weh 22611

**KERRIGAN**

Weh Jacky

**TPI**  
**+2730****NET MERIT \$**  
**+696****CHEESE MERIT \$**  
**+712****► PRODUCTION TRAITS (79% REL)**

Milk	% Fat	Fat	% Protein	Protein
<b>+935 lbs</b>	<b>+0,05</b>	<b>+50</b>	<b>+0,06</b>	<b>+45</b>
K Casein <b>AA</b>		Beta Lactoglobuline <b>AA</b>		Beta Casein <b>A2A2</b>

**► HEALTH TRAITS**

SCS	<b>+2,72</b>	SCE	<b>+1,30</b>
PL	<b>+4,50</b>	DCE	<b>+2,00</b>
DPR	<b>+1,40</b>	FI	<b>+1,60</b>

**► TYPE TRAITS**PTAT **+0,99** UDC **+1,25** FLC **+1,41**

Stature				<b>0,06</b>
Stenght				<b>-0,29</b>
Body Dept				<b>-0,50</b>
Dairy Form				<b>-0,31</b>
Rump Angle				<b>-0,18</b>
Thurl Width				<b>-0,32</b>
Rear Legs-Side				<b>-1,40</b>
Rear Legs-Rear				<b>1,61</b>
Foot Angle				<b>1,14</b>
Feet & Legs Score				<b>1,30</b>
F. Udder Attachment				<b>1,13</b>
Rear Udder Height				<b>1,78</b>
Rear Udder Width				<b>1,14</b>
Udder Cleft				<b>0,36</b>
Udder Depth				<b>1,34</b>
Front Teat Placement				<b>0,24</b>
Rear Teat P. Rear				<b>-0,06</b>
Teat Lenght				<b>-0,34</b>

-0,5 0 +0,5 +1 +1,5

ISOLABELLA  
INSEME**RITMO RF**

IT001991322672 - 543HO00271 - aAa 243

SEXED SEMEN *Made in Italy*  
**FOEMINA**  
Sexed **ULTRA 4M**

Isolabella Inseme Ritmo RF

**RONALD RF**

Salvatore x Silver

**ACHIEVER**

Luis-Ooh Perrotta

**DOORSOPEN**De Crob Rita 0077  
B+82**TPI**  
**+2593****NET MERIT \$**  
**+555****CHEESE MERIT \$**  
**+568****► PRODUCTION TRAITS (81% REL)**

Milk	% Fat	Fat	% Protein	Protein
<b>+635 lbs</b>	<b>+0,11</b>	<b>+57</b>	<b>+0,05</b>	<b>+34</b>
K Casein <b>BB</b>		Beta Lactoglobuline <b>AB</b>		Beta Casein <b>A1A2</b>

**► HEALTH TRAITS**

SCS	<b>+2,78</b>	SCE	<b>+2,10</b>
PL	<b>+2,80</b>	DCE	<b>+2,70</b>
DPR	<b>-1,50</b>	FI	<b>-1,00</b>

**► TYPE TRAITS**PTAT **+1,47** UDC **+1,82** FLC **+0,50**

Stature				<b>1,81</b>
Stenght				<b>0,19</b>
Body Dept				<b>0,51</b>
Dairy Form				<b>1,14</b>
Rump Angle				<b>0,27</b>
Thurl Width				<b>0,90</b>
Rear Legs-Side				<b>-0,45</b>
Rear Legs-Rear				<b>0,92</b>
Foot Angle				<b>1,27</b>
Feet & Legs Score				<b>0,80</b>
F. Udder Attachment				<b>2,52</b>
Rear Udder Height				<b>2,33</b>
Rear Udder Width				<b>1,75</b>
Udder Cleft				<b>1,05</b>
Udder Depth				<b>2,54</b>
Front Teat Placement				<b>2,20</b>
Rear Teat P. Rear				<b>1,73</b>
Teat Lenght				<b>-1,17</b>

-0,5 0 +0,5 +1 +1,5



**Polled**AIMONETTA  
INSEME**SOGNO ROSSO PR**

IT006990129591 - 543HO00246 - aAa 234

SEXED SEMEN *Made in Italy*  
**FOEMINA**  
Sexed **ULTRA 4M****LUCKY**

Jax P x Mogul

**KINGBOY**Lesperron Kingboy  
Santana MB85**NUMERO UNO**Josey-Lic Sangaria  
MB85**TPI**  
**+2310****NET MERIT \$**  
**+311****CHEESE MERIT \$**  
**+328****PRODUCTION TRAITS (82% REL)**

Milk	% Fat	Fat	% Protein	Protein
<b>-83 lbs</b>	<b>+0,09</b>	<b>+22</b>	<b>+0,07</b>	<b>+16</b>
K Casein <b>AB</b>		Beta Lactoglobuline <b>AB</b>		Beta Casein <b>A2A2</b>

**HEALTH TRAITS**

SCS	<b>+2,67</b>	SCE	<b>+2,00</b>
PL	<b>+2,80</b>	DCE	<b>+2,10</b>
DPR	<b>-0,20</b>	FI	<b>+0,20</b>

**TYPE TRAITS**PTAT **+0,71** UDC **+0,87** FLC **+0,29**

Stature				<b>1,19</b>
Stenght				<b>0,61</b>
Body Dept				<b>0,60</b>
Dairy Form				<b>0,35</b>
Rump Angle				<b>0,95</b>
Thurl Width				<b>0,54</b>
Rear Legs-Side				<b>-0,28</b>
Rear Legs-Rear				<b>0,29</b>
Foot Angle				<b>0,73</b>
Feet & Legs Score				<b>0,57</b>
F. Udder Attachment				<b>1,30</b>
Rear Udder Height				<b>1,48</b>
Rear Udder Width				<b>0,50</b>
Udder Cleft				<b>0,53</b>
Udder Depth				<b>1,50</b>
Front Teat Placement				<b>0,21</b>
Rear Teat P. Rear				<b>0,11</b>
Teat Length				<b>0,16</b>

**A2A2**  
BETA CASEIN**Polled**DEL SANTO  
INSEME**WALLY RED PR**

IT098990790444 - 543HO00282 - aAa 423

SEXED SEMEN *Made in Italy*  
**FOEMINA**  
Sexed **ULTRA 4M****SOLITAIR P**

Mr Salvatore x Balisto

**ABI RED PP**Del Santo Barletta  
MB88**IMPRESSION**

Del Santo Saila EX90

**TPI**  
**+2646****NET MERIT \$**  
**+698****CHEESE MERIT \$**  
**+707****PRODUCTION TRAITS (81% REL)**

Milk	% Fat	Fat	% Protein	Protein
<b>+913 lbs</b>	<b>+0,12</b>	<b>+69</b>	<b>+0,06</b>	<b>+45</b>
K Casein <b>BB</b>		Beta Lactoglobuline <b>AA</b>		Beta Casein <b>A2A2</b>

**HEALTH TRAITS**

SCS	<b>+3,02</b>	SCE	<b>+1,60</b>
PL	<b>+3,30</b>	DCE	<b>+2,00</b>
DPR	<b>-2,00</b>	FI	<b>-1,30</b>

**TYPE TRAITS**PTAT **+1,13** UDC **+1,30** FLC **+0,88**

Stature				<b>0,28</b>
Stenght				<b>-0,20</b>
Body Dept				<b>0,07</b>
Dairy Form				<b>1,24</b>
Rump Angle				<b>0,31</b>
Thurl Width				<b>0,59</b>
Rear Legs-Side				<b>1,22</b>
Rear Legs-Rear				<b>1,02</b>
Foot Angle				<b>0,37</b>
Feet & Legs Score				<b>0,91</b>
F. Udder Attachment				<b>1,59</b>
Rear Udder Height				<b>1,72</b>
Rear Udder Width				<b>1,71</b>
Udder Cleft				<b>0,27</b>
Udder Depth				<b>0,96</b>
Front Teat Placement				<b>0,31</b>
Rear Teat P. Rear				<b>0,03</b>
Teat Length				<b>-0,55</b>

**A2A2**  
BETA CASEIN

# GTPI PROVEN TOP 10

Naab Code	Name	Sire	Mgs	A2A2	Kappa Casein	KBB	TPI	Net Merit	Milk (lbs)	Fat (lbs)	Fat %	Pr (lbs)	Pr %	SCS	PL	DPR	SCE	PTAT	UDC	FLC
543H000216	Bernini	Guarantee	Altahotrod	A2A2		4315	<b>2717</b>	733	548	63	0,15	29	0,04	2,59	5,2	-0,1	2,1	1,21	1,82	0,48
543H000194	Eduardo	Perseus	Battlecry	A2A2		4365	<b>2679</b>	608	1137	41	-0,01	37	0,01	2,55	4,7	3,0	1,8	1,11	1,37	-0,27
543H000208	Rubesco	Imax	Jedi	A2A2		3703	<b>2676</b>	653	1870	63	-0,03	67	0,03	3,02	2,5	-3,0	1,9	1,48	1,66	0,14
543H000163	Liver	Superhero	Missouri	A2A2	BB	4310	<b>2651</b>	644	1442	42	-0,05	47	0,01	2,64	3,4	1,8	2,2	0,79	1,20	-0,17
543H000199	Giordano	Perseus	Rodanas			4259	<b>2625</b>	593	539	75	0,19	40	0,08	2,61	2,6	-0,5	2,2	0,99	0,97	-0,22
543H000192	Sorrento	Hotline	Battlecry	A2A2		4129	<b>2624</b>	508	533	78	0,20	41	0,09	2,73	-0,5	-2,4	2,0	1,52	1,53	1,33
543H000086	Sound System	Silver	Supersire			3808	<b>2617</b>	548	1254	80	0,11	45	0,02	2,99	0,9	-1,6	3,0	1,64	1,23	-0,16
543H000209	Habitus	Pharo	Silver			3832	<b>2609</b>	517	999	54	0,05	41	0,03	2,91	2,5	-1,3	2,0	2,33	2,31	0,39
543H000166	Munari	Hotline	Dozer			4120	<b>2586</b>	407	647	57	0,11	42	0,08	2,98	-1,1	-2,2	2,1	1,77	2,07	2,06
543H000157	Marzemino	Sound System	Kingboy			3849	<b>2548</b>	460	832	60	0,10	32	0,02	2,87	1,4	0,7	2,5	1,28	1,26	-0,38
543H000204	Bramante	Sound System	Altahotrod			3998	<b>2546</b>	461	711	63	0,12	40	0,06	2,83	1,2	-1,8	2,4	1,43	1,43	-0,19
543H000116	Higgins	Van Halen	Supersire	A2A2		3798	<b>2541</b>	538	879	73	0,14	44	0,06	2,91	2,0	-1,7	1,9	0,61	0,47	0,28
543H000233	Sigillo	Padawan	Altasuperstar	A2A2	BB	4144	<b>2539</b>	568	1192	33	-0,04	56	0,06	2,91	3,1	1,5	2,1	0,47	0,49	-1,31
543H000167	Neutron	Charley	Powerball-P	A2A2	BB	4211	<b>2529</b>	491	1724	22	-0,15	58	0,01	2,82	2,1	0,5	1,8	1,10	0,89	0,21
543H000172	Antani	Brasileiro	Lochinvar		BB	3659	<b>2527</b>	480	244	63	0,19	30	0,08	2,92	1,2	0,3	1,7	1,26	1,05	1,03
543H000145	Monzon	Altahotrod	Mccutchen	A2A2		3791	<b>2485</b>	400	1296	56	0,02	47	0,02	3,03	0,3	-1,9	2,1	1,62	0,81	-0,32
543H000197	Faletti	Perseus	Mardi Gras	A2A2		3910	<b>2475</b>	446	488	35	0,06	34	0,07	2,98	2,0	2,0	1,6	0,61	0,99	-0,08
543H000067	Van Halen	Montross	Mccutchen	A2A2		3656	<b>2473</b>	396	1049	49	0,03	39	0,02	2,90	1,2	-1,8	1,9	1,29	1,28	0,90
543H000087	Sharpe	Alta1stclass	Epic			3966	<b>2425</b>	407	1406	38	-0,05	34	-0,03	2,87	1,3	-1,9	1,9	1,08	2,07	0,58
543H000243	Jenson	Balisto	Epic	A2A2		3667	<b>2381</b>	400	918	26	-0,03	51	0,08	3,08	0,4	-1,0	1,5	0,59	0,69	0,92
543H000152	Moondance	Altahotrod	Mccutchen	A2A2		3301	<b>2376</b>	303	1947	30	-0,15	49	-0,04	3,18	0,1	-2,4	2,2	1,58	1,22	0,13
543H000212	Raffaello	Enterprise	Silver	A2A2	BB	3754	<b>2370</b>	293	81	31	0,10	25	0,08	2,84	1,1	-1,4	2,2	1,57	1,50	0,88
543H000214	Briatore	Argo	Altahotrod			3516	<b>2365</b>	179	769	16	-0,05	29	0,02	2,92	0,4	-0,7	2,5	2,35	2,06	0,70
543H000138	Moonwalk	Altahotrod	Mccutchen	A2A2		3604	<b>2363</b>	315	1164	17	-0,10	33	-0,01	3,02	1,1	-0,1	2,1	1,34	1,06	0,53
543H000102	Medalist	Supershot	Mccutchen			3339	<b>2325</b>	383	1128	31	-0,04	40	0,02	3,09	1,4	-0,3	1,8	0,26	0,46	-0,62

USDA 12/2022

## CERESIO INSEME **ANTANI**

IT012990080053 - 543HO00172 - aAa 231456



**BRASILEIRO** x **LOCHINVAR** x **WYMAN**  
Balisto x Epic x Ceresio Winnie B+84 x Ceresio Winter MB88



**TPI +2527**      **NET MERIT \$ +480**      **CHEESE MERIT \$ +494**

► **PRODUCTION TRAITS** based on 1689 daughters in 553 herds (90% REL)

Milk	% Fat	Fat	% Protein	Protein
<b>+244 lbs</b>	<b>+0,19</b>	<b>+63</b>	<b>+0,08</b>	<b>+30</b>
K Casein <b>BB</b>		Beta Lactoglobuline <b>AB</b>		Beta Casein <b>A1A2</b>

► **TYPE TRAITS**

PTAT	<b>+1,26</b>	UDC	<b>+1,05</b>	FLC	<b>+1,03</b>
------	--------------	-----	--------------	-----	--------------

► **HEALTH TRAITS**

SCS	<b>+2,92</b>	SCE	<b>+1,70</b>
PL	<b>+1,20</b>	DCE	<b>+2,20</b>
DPR	<b>+0,30</b>	FI	<b>+0,00</b>

Stature				<b>0,85</b>
Stenght				<b>0,04</b>
Body Dept				<b>1,05</b>
Dairy Form				<b>1,82</b>
Rump Angle				<b>-0,31</b>
Thurl Width				<b>0,76</b>
Rear Legs-Side				<b>1,37</b>
Rear Legs-Rear				<b>0,94</b>
Foot Angle				<b>0,63</b>
Feet & Legs Score				<b>1,28</b>
F. Udder Attachment				<b>0,87</b>
Rear Udder Height				<b>1,83</b>
Rear Udder Width				<b>1,46</b>
Udder Cleft				<b>1,07</b>
Udder Depth				<b>0,56</b>
Front Teat Placement				<b>1,81</b>
Rear Teat P. Rear				<b>1,46</b>
Teat Lenght				<b>1,34</b>



GO-FARM

## BERNINI

IT019991728770 - 543HO00216 - aAa 234

SEXED SEMEN *Made in Italy*  
**FOEMINA**  
Sexed **ULTRA 4M**

## GUARANTEE

Boastful x Tango

## HOTROD

Go-Farm-Bomba  
MB85

## MCCUTCHEN

Go-Farm Brashine  
EX91

TPI

+2717

NET MERIT \$

+733

CHEESE MERIT \$

+749

## ► PRODUCTION TRAITS based on 164 daughters in 68 herds (88% REL)

Milk	% Fat	Fat	% Protein	Protein
<b>+548 lbs</b>	<b>+0,15</b>	<b>+63</b>	<b>+0,04</b>	<b>+29</b>
K Casein <b>AA</b>		Beta Lactoglobuline <b>AB</b>		Beta Casein <b>A2A2</b>

## ► HEALTH TRAITS

SCS	<b>+2,59</b>	SCE	<b>+2,10</b>
PL	<b>+5,20</b>	DCE	<b>+1,80</b>
DPR	<b>-0,10</b>	FI	<b>+0,30</b>

## ► TYPE TRAITS

PTAT **+1,21** UDC **+1,82** FLC **+0,48**

Stature				<b>0,77</b>
Stenght				<b>-0,89</b>
Body Dept				<b>-0,86</b>
Dairy Form				<b>0,68</b>
Rump Angle				<b>-0,74</b>
Thurl Width				<b>0,58</b>
Rear Legs-Side				<b>0,60</b>
Rear Legs-Rear				<b>0,25</b>
Foot Angle				<b>0,68</b>
Feet & Legs Score				<b>0,72</b>
F. Udder Attachment			>	<b>2,40</b>
Rear Udder Height			>	<b>1,93</b>
Rear Udder Width			>	<b>1,69</b>
Udder Cleft			>	<b>1,13</b>
Udder Depth			>	<b>2,53</b>
Front Teat Placement			>	<b>0,90</b>
Rear Teat P. Rear			>	<b>0,45</b>
Teat Lenght				<b>-1,39</b>



GO-FARM

## BRAMANTE

IT019991671675 - 543HO00204 - aAa 243

SEXED SEMEN *Made in Italy*  
**FOEMINA**  
Sexed **ULTRA 4M**

## SOUND SYSTEM

Silver x Supersire

## HOTROD

Go-Farm-Bank

## MCCUTCHEN

Go-Farm Brashine  
EX91TPI  
+2546NET MERIT \$  
+461CHEESE MERIT \$  
+475

## ► PRODUCTION TRAITS based on 1255 daughters in 339 herds (90% REL)

Milk	% Fat	Fat	% Protein	Protein
<b>+711 lbs</b>	<b>+0,12</b>	<b>+63</b>	<b>+0,06</b>	<b>+40</b>
K Casein <b>AE</b>		Beta Lactoglobuline <b>AA</b>		Beta Casein <b>A1A2</b>

## ► HEALTH TRAITS

SCS	<b>+2,83</b>	SCE	<b>+2,40</b>
PL	<b>+1,20</b>	DCE	<b>+2,30</b>
DPR	<b>-1,80</b>	FI	<b>-1,20</b>



## ► TYPE TRAITS

PTAT **+1,43** UDC **+1,43** FLC **-0,19**

Stature			>	<b>2,75</b>
Stenght				<b>0,50</b>
Body Dept				<b>0,80</b>
Dairy Form				<b>1,42</b>
Rump Angle			>	<b>1,54</b>
Thurl Width				<b>0,84</b>
Rear Legs-Side				<b>0,78</b>
Rear Legs-Rear				<b>0,28</b>
Foot Angle			>	<b>1,53</b>
Feet & Legs Score				<b>0,38</b>
F. Udder Attachment			>	<b>2,11</b>
Rear Udder Height			>	<b>1,78</b>
Rear Udder Width			>	<b>1,60</b>
Udder Cleft			>	<b>1,57</b>
Udder Depth			>	<b>2,84</b>
Front Teat Placement			>	<b>1,38</b>
Rear Teat P. Rear			>	<b>1,74</b>
Teat Lenght				<b>-0,99</b>



ISOLABELLA  
BRIATORE

# BRIATORE

IT001991129517 - 543HO00214 - aAa 213



Isolabella Briatore

**ARGO**

Silver x Supersire

**HOTROD**

Isolabella Royal  
Bomby ET EX90

**DOORMAN**

Brill Royal Doorman  
Blondie GP81

**TPI**

**+2365**

**NET MERIT \$**

**+179**

**CHEESE MERIT \$**

**+183**

► **PRODUCTION TRAITS** based on 79 daughters in 42 herds (86% REL)

Milk	% Fat	Fat	% Protein	Protein
<b>+769 lbs</b>	<b>-0,05</b>	<b>+16</b>	<b>+0,02</b>	<b>+29</b>
K Casein <b>AB</b>		Beta Lactoglobuline <b>AA</b>		Beta Casein <b>A1A2</b>

► **HEALTH TRAITS**

SCS	<b>+2,92</b>	SCE	<b>+2,50</b>
PL	<b>+0,40</b>	DCE	<b>+2,70</b>
DPR	<b>-0,70</b>	FI	<b>-0,30</b>

► **TYPE TRAITS**

PTAT **+2,35** UDC **+2,06** FLC **+0,70**

Stature	>	3,97
Stenght	>	1,41
Body Dept	>	1,65
Dairy Form	>	1,97
Rump Angle	>	1,42
Thurl Width	>	2,34
Rear Legs-Side	>	-0,11
Rear Legs-Rear	>	1,62
Foot Angle	>	2,19
Feet & Legs Score	>	1,40
F. Udder Attachment	>	2,96
Rear Udder Height	>	3,05
Rear Udder Width	>	2,91
Udder Cleft	>	1,76
Udder Depth	>	3,34
Front Teat Placement	>	1,18
Rear Teat P. Rear	>	1,51
Teat Lenght	>	-1,06

CIRIO AGR.  
EQUITY GAP

# EDUARDO

IT061990821887 - 543HO00194 - aAa 234



Cirio Agr. Equity Gap Eduardo

**PERSEUS**

Penmanship  
x Doorman

**BATTLECRY**

Cirio Agricola Ermione  
GP84

**CASHMONEY**

Cirio Agricola Elettra  
MB88 EXMS

**TPI**  
**+2679**

**NET MERIT \$**  
**+608**

**CHEESE MERIT \$**  
**+619**

► **PRODUCTION TRAITS** based on 720 daughters in 201 herds (89% REL)

Milk	% Fat	Fat	% Protein	Protein
<b>+1137 lbs</b>	<b>-0,01</b>	<b>+41</b>	<b>+0,01</b>	<b>+37</b>
K Casein <b>AA</b>		Beta Lactoglobuline <b>AA</b>		Beta Casein <b>A2A2</b>

► **HEALTH TRAITS**

SCS	<b>+2,55</b>	SCE	<b>+1,80</b>
PL	<b>+4,70</b>	DCE	<b>+2,00</b>
DPR	<b>+3,00</b>	FI	<b>+3,00</b>

► **TYPE TRAITS**

PTAT **+1,11** UDC **+1,37** FLC **-0,27**

Stature	>	1,28
Stenght	>	0,39
Body Dept	>	0,29
Dairy Form	>	0,43
Rump Angle	>	0,46
Thurl Width	>	-0,05
Rear Legs-Side	>	-1,05
Rear Legs-Rear	>	-0,21
Foot Angle	>	1,44
Feet & Legs Score	>	0,02
F. Udder Attachment	>	1,78
Rear Udder Height	>	1,23
Rear Udder Width	>	1,37
Udder Cleft	>	1,19
Udder Depth	>	2,17
Front Teat Placement	>	0,93
Rear Teat P. Rear	>	0,83
Teat Lenght	>	0,04



IDEVRA  
ROYAL

## GIORDANO

## PERSEUS

Penmanship x  
Doorman

## RODANAS

Idevra Royal Grinta  
MB88

## AGENCY

Gal-Farm Goga

TPI  
**+2625**NET MERIT \$  
**+593**CHEESE MERIT \$  
**+615**

## ▶ PRODUCTION TRAITS based on 1453 daughters in 402 herds (90% REL)

Milk	% Fat	Fat	% Protein	Protein
<b>+539 lbs</b>	<b>+0,19</b>	<b>+75</b>	<b>+0,08</b>	<b>+40</b>
K Casein <b>AB</b>		Beta Lactoglobuline <b>AA</b>		Beta Casein <b>A1A2</b>

## ▶ HEALTH TRAITS

SCS	<b>+2,61</b>	SCE	<b>+2,20</b>
PL	<b>+2,60</b>	DCE	<b>+2,20</b>
DPR	<b>-0,50</b>	FI	<b>-0,40</b>



IT019991621646 - 543HO00199 - aAa 135

SEXED SEMEN *Made in Italy*  
**FOEMINA**  
Sexed **ULTRA 4M**

## ▶ TYPE TRAITS

PTAT **+0,99** UDC **+0,97** FLC **-0,22**

Stature				<b>1,72</b>
Stenght				<b>0,98</b>
Body Dept				<b>1,05</b>
Dairy Form				<b>1,03</b>
Rump Angle				<b>-0,74</b>
Thurl Width				<b>1,51</b>
Rear Legs-Side				<b>0,04</b>
Rear Legs-Rear				<b>-0,01</b>
Foot Angle				<b>1,24</b>
Feet & Legs Score				<b>0,13</b>
F. Udder Attachment				<b>0,89</b>
Rear Udder Height				<b>1,00</b>
Rear Udder Width				<b>1,19</b>
Udder Cleft				<b>2,27</b>
Udder Depth				<b>1,54</b>
Front Teat Placement				<b>1,84</b>
Rear Teat P. Rear				<b>2,19</b>
Teat Lenght				<b>-0,34</b>

-0,5 0 +0,5 +1 +1,5

PESS FARM  
PERSEUS

## FALETTI

## PERSEUS

Penmanship x  
Doorman

## MARDI GRAS

Pessa Farm Mardi Gras  
Umina EX90

## EUDON

Pessa Farm Eudon  
Spagnola B+84TPI  
**+2475**NET MERIT \$  
**+446**CHEESE MERIT \$  
**+457**

## ▶ PRODUCTION TRAITS based on 779 daughters in 241 herds (90% REL)

Milk	% Fat	Fat	% Protein	Protein
<b>+488 lbs</b>	<b>+0,06</b>	<b>+35</b>	<b>+0,07</b>	<b>+34</b>
K Casein <b>AB</b>		Beta Lactoglobuline <b>AA</b>		Beta Casein <b>A2A2</b>

## ▶ HEALTH TRAITS

SCS	<b>+2,98</b>	SCE	<b>+1,60</b>
PL	<b>+2,00</b>	DCE	<b>+1,60</b>
DPR	<b>+2,00</b>	FI	<b>+2,10</b>



IT004991763908 - 543HO00197 - aAa 243

SEXED SEMEN *Made in Italy*  
**FOEMINA**  
Sexed **ULTRA 4M**

## ▶ TYPE TRAITS

PTAT **+0,61** UDC **+0,99** FLC **-0,08**

Stature				<b>0,04</b>
Stenght				<b>-0,18</b>
Body Dept				<b>-0,60</b>
Dairy Form				<b>-0,44</b>
Rump Angle				<b>0,98</b>
Thurl Width				<b>0,08</b>
Rear Legs-Side				<b>-2,46</b>
Rear Legs-Rear				<b>-0,21</b>
Foot Angle				<b>1,87</b>
Feet & Legs Score				<b>-0,02</b>
F. Udder Attachment				<b>1,56</b>
Rear Udder Height				<b>0,70</b>
Rear Udder Width				<b>0,45</b>
Udder Cleft				<b>0,83</b>
Udder Depth				<b>1,54</b>
Front Teat Placement				<b>0,61</b>
Rear Teat P. Rear				<b>0,17</b>
Teat Lenght				<b>-0,83</b>

-0,5 0 +0,5 +1 +1,5



NI000562148420 - 543HO00209

A-L-H

# HABITUS

**PHARO**

Jedi x Balisto

X

**SILVER**

A-L-H Havanna

X

**SUPERSIRE**

Cookiecutter Ssire  
Have MB86

**TPI**  
**+2609**

**NET MERIT \$**  
**+517**

**CHEESE MERIT \$**  
**+525**



A-L-H Habitus

► **PRODUCTION TRAITS** based on 444 daughters in 130 herds (89% REL)

Milk	% Fat	Fat	% Protein	Protein
<b>+999 lbs</b>	<b>+0,05</b>	<b>+54</b>	<b>+0,03</b>	<b>+41</b>
K Casein <b>BE</b>		Beta Lactoglobuline <b>AB</b>		Beta Casein <b>A1A2</b>

► **HEALTH TRAITS**

SCS	<b>+2,91</b>	SCE	<b>+2,00</b>
PL	<b>+2,50</b>	DCE	<b>+2,10</b>
DPR	<b>-1,30</b>	FI	<b>-1,20</b>

► **TYPE TRAITS**

PTAT **+2,33** UDC **+2,31** FLC **+0,39**

Stature	>	2,71
Stenght		0,67
Body Dept		1,16
Dairy Form	>	2,21
Rump Angle		0,30
Thurl Width		0,95
Rear Legs-Side		0,21
Rear Legs-Rear		0,55
Foot Angle		1,50
Feet & Legs Score		1,00
F. Udder Attachment	>	2,99
Rear Udder Height	>	3,28
Rear Udder Width	>	2,87
Udder Cleft	>	2,09
Udder Depth	>	2,71
Front Teat Placement	>	1,66
Rear Teat P. Rear	>	1,87
Teat Lenght		-1,09

-0,5 0 +0,5 +1 +1,5

BALLOTTINO

# HIGGINS

IT019991587216 - 543HO00116 - aAa 234

**VANHALEN**

Montross x  
Mccutchen

X

**SUPERSIRE**

Ballottino Farm  
Carmen

X

**MILLION**

Ballottino Farm Fiera  
B+83

**TPI**  
**+2541**

**NET MERIT \$**  
**+538**

**CHEESE MERIT \$**  
**+550**



Ballottino Farm Supersire Carmen

► **PRODUCTION TRAITS** based on 174 daughters in 78 herds (88% REL)

Milk	% Fat	Fat	% Protein	Protein
<b>+879 lbs</b>	<b>+0,14</b>	<b>+73</b>	<b>+0,06</b>	<b>+44</b>
K Casein <b>AB</b>		Beta Lactoglobuline <b>AA</b>		Beta Casein <b>A2A2</b>

► **HEALTH TRAITS**

SCS	<b>+2,91</b>	SCE	<b>+1,90</b>
PL	<b>+2,00</b>	DCE	<b>+2,50</b>
DPR	<b>-1,70</b>	FI	<b>-1,50</b>

► **TYPE TRAITS**

PTAT **+0,61** UDC **+0,47** FLC **+0,28**

Stature		0,25
Stenght		0,10
Body Dept		0,31
Dairy Form	>	1,54
Rump Angle		0,30
Thurl Width		0,27
Rear Legs-Side		0,02
Rear Legs-Rear		0,38
Foot Angle		-0,98
Feet & Legs Score		0,39
F. Udder Attachment		0,66
Rear Udder Height		1,08
Rear Udder Width		1,00
Udder Cleft		0,13
Udder Depth		-0,19
Front Teat Placement		-0,09
Rear Teat P. Rear		-1,11
Teat Lenght		-0,05

-0,5 0 +0,5 +1 +1,5





HEUER  
BALISTO

## JENSON

DE000356761336 - 543H000243 - aAa 423651

SEXED SEMEN *Made in Italy*  
**FOEMINA**  
Sexed **ULTRA 4M****BALISTO****EPIC****BRONCO**

Bookem x Watson

Weh Jen 33 MB86

Weh Jannett 87 MB85

TPI  
**+2381**NET MERIT \$  
**+400**CHEESE MERIT \$  
**+411**

## ► PRODUCTION TRAITS based on 2426 daughters in 673 herds (90% REL)

Milk	% Fat	Fat	% Protein	Protein
<b>+918 lbs</b>	<b>-0,03</b>	<b>+26</b>	<b>+0,08</b>	<b>+51</b>
K Casein <b>AB</b>		Beta Lactoglobuline <b>AB</b>		Beta Casein <b>A2A2</b>

## ► HEALTH TRAITS

SCS	<b>+3,08</b>	SCE	<b>+1,50</b>
PL	<b>+0,40</b>	DCE	<b>+2,20</b>
DPR	<b>-1,00</b>	FI	<b>-0,90</b>

## ► TYPE TRAITS

PTAT **+0,59** UDC **+0,69** FLC **+0,92**

Stature				<b>0,59</b>
Stenght				<b>-0,14</b>
Body Dept				<b>0,11</b>
Dairy Form				<b>0,63</b>
Rump Angle				<b>-2,18</b>
Thurl Width				<b>-0,15</b>
Rear Legs-Side				<b>-0,22</b>
Rear Legs-Rear				<b>1,09</b>
Foot Angle				<b>1,55</b>
Feet & Legs Score				<b>0,91</b>
F. Udder Attachment				<b>0,60</b>
Rear Udder Height				<b>1,39</b>
Rear Udder Width				<b>1,23</b>
Udder Cleft				<b>0,60</b>
Udder Depth				<b>0,13</b>
Front Teat Placement				<b>0,30</b>
Rear Teat P. Rear				<b>0,60</b>
Teat Length				<b>1,02</b>



PRISMAGEN

## LIVER

DE000360385506 - 543H000163 - aAa 234

SEXED SEMEN *Made in Italy*  
**FOEMINA**  
Sexed **ULTRA 4M****SUPERHERO****MISSOURI****NUMERO UNO**

Supershot x Numero Uno

Pg Ladylike MB86

Hlm Lane MB85

TPI  
**+2651**NET MERIT \$  
**+644**CHEESE MERIT \$  
**+653**

## ► PRODUCTION TRAITS based on 1117 daughters in 284 herds (90% REL)

Milk	% Fat	Fat	% Protein	Protein
<b>+1442 lbs</b>	<b>-0,05</b>	<b>+42</b>	<b>+0,01</b>	<b>+47</b>
K Casein <b>BB</b>		Beta Lactoglobuline <b>AB</b>		Beta Casein <b>A2A2</b>

## ► HEALTH TRAITS

SCS	<b>+2,64</b>	SCE	<b>+2,20</b>
PL	<b>+3,40</b>	DCE	<b>+2,00</b>
DPR	<b>+1,80</b>	FI	<b>+1,70</b>

## ► TYPE TRAITS

PTAT **+0,79** UDC **+1,20** FLC **-0,17**

Stature				<b>-0,03</b>
Stenght				<b>-0,52</b>
Body Dept				<b>-0,47</b>
Dairy Form				<b>0,30</b>
Rump Angle				<b>-1,94</b>
Thurl Width				<b>0,91</b>
Rear Legs-Side				<b>1,43</b>
Rear Legs-Rear				<b>-0,93</b>
Foot Angle				<b>-0,56</b>
Feet & Legs Score				<b>0,15</b>
F. Udder Attachment				<b>2,18</b>
Rear Udder Height				<b>1,35</b>
Rear Udder Width				<b>1,12</b>
Udder Cleft				<b>-0,02</b>
Udder Depth				<b>1,35</b>
Front Teat Placement				<b>-0,80</b>
Rear Teat P. Rear				<b>-0,59</b>
Teat Length				<b>0,93</b>



GARIONI SOUND

# MARZEMINO

IT019991673056 - 543HO00157 - aAa 231

SEXED SEMEN *Made in Italy*  
**FOEMINA**  
Sexed **ULTRA**



## SOUND SYSTEM

Silver x Supersire

## KINGBOY

Garioni Royal KB  
Maelyn MB87

## FREDDIE

Morningview Freddie  
Mimi EX90

**TPI**  
**+2548**

**NET MERIT \$**  
**+460**

**CHEESE MERIT \$**  
**+467**

### ► PRODUCTION TRAITS based on 565 daughters in 181 herds (90% REL)

Milk	% Fat	Fat	% Protein	Protein
<b>+832 lbs</b>	<b>+0,1</b>	<b>+60</b>	<b>+0,02</b>	<b>+32</b>
K Casein <b>AB</b>		Beta Lactoglobuline <b>AA</b>		Beta Casein <b>A1A2</b>

### ► HEALTH TRAITS

SCS	<b>+2,87</b>	SCE	<b>+2,50</b>
PL	<b>+1,40</b>	DCE	<b>+2,10</b>
DPR	<b>+0,70</b>	FI	<b>+1,20</b>



### ► TYPE TRAITS

PTAT **+1,28** UDC **+1,26** FLC **-0,38**

Stature				<b>1,64</b>
Stenght				<b>0,97</b>
Body Dept				<b>0,99</b>
Dairy Form				<b>1,00</b>
Rump Angle				<b>-0,06</b>
Thurl Width				<b>1,46</b>
Rear Legs-Side				<b>1,23</b>
Rear Legs-Rear				<b>-0,14</b>
Foot Angle				<b>0,78</b>
Feet & Legs Score				<b>0,03</b>
F. Udder Attachment				<b>1,45</b>
Rear Udder Height				<b>2,12</b>
Rear Udder Width				<b>1,72</b>
Udder Cleft				<b>0,98</b>
Udder Depth				<b>1,22</b>
Front Teat Placement				<b>1,04</b>
Rear Teat P. Rear				<b>0,83</b>
Teat Lenght				<b>0,66</b>

GANDY ROYAL  
MEDALIST

# MEDALIST

IT020991065090 - 543HO00102 - aAa 432

SEXED SEMEN *Made in Italy*  
**FOEMINA**  
Sexed **ULTRA 4M**



## SUPERSHOT

Supersire x Super

## MCCUTCHEN

Gandy Ludmilla GP83

## PLANET

Gandy Planet  
Lady Gaga GP81

**TPI**  
**+2325**

**NET MERIT \$**  
**+383**

**CHEESE MERIT \$**  
**+385**

### ► PRODUCTION TRAITS based on 1208 daughters in 330 herds (90% REL)

Milk	% Fat	Fat	% Protein	Protein
<b>+1128 lbs</b>	<b>-0,04</b>	<b>+31</b>	<b>+0,02</b>	<b>+40</b>
K Casein <b>AE</b>		Beta Lactoglobuline <b>AB</b>		Beta Casein <b>A1A2</b>

### ► HEALTH TRAITS

SCS	<b>+3,09</b>	SCE	<b>+1,80</b>
PL	<b>+1,40</b>	DCE	<b>+2,10</b>
DPR	<b>-0,30</b>	FI	<b>-0,30</b>

### ► TYPE TRAITS

PTAT **+0,26** UDC **+0,46** FLC **-0,62**

Stature				<b>-0,15</b>
Stenght				<b>0,36</b>
Body Dept				<b>0,17</b>
Dairy Form				<b>0,17</b>
Rump Angle				<b>-0,08</b>
Thurl Width				<b>1,04</b>
Rear Legs-Side				<b>1,68</b>
Rear Legs-Rear				<b>-0,86</b>
Foot Angle				<b>-0,33</b>
Feet & Legs Score				<b>-0,47</b>
F. Udder Attachment				<b>0,65</b>
Rear Udder Height				<b>0,55</b>
Rear Udder Width				<b>0,90</b>
Udder Cleft				<b>0,51</b>
Udder Depth				<b>-0,40</b>
Front Teat Placement				<b>0,51</b>
Rear Teat P. Rear				<b>0,72</b>
Teat Lenght				<b>-0,92</b>

GANDY INSEME

# MONZON

IT020991130892 - 543HO00145 - aAa 324165



**HOTROD**

Jerod x Iota

**MCCUTCHEN**

Gandy Ludmilla B+83

**PLANET**

Gandy Planet Lady Gaga B+81

**TPI**  
**+2485**

**NET MERIT \$**  
**+400**

**CHEESE MERIT \$**  
**+404**

► **PRODUCTION TRAITS** based on 201 daughters in 50 herds (89% REL)

Milk	% Fat	Fat	% Protein	Protein
<b>+1296 lbs</b>	<b>+0,02</b>	<b>+56</b>	<b>+0,02</b>	<b>+47</b>
K Casein <b>AA</b>		Beta Lactoglobuline <b>BB</b>		Beta Casein <b>A2A2</b>

► **HEALTH TRAITS**

SCS	<b>+3,03</b>	SCE	<b>+2,10</b>
PL	<b>+0,30</b>	DCE	<b>+2,40</b>
DPR	<b>-1,90</b>	FI	<b>-0,90</b>

► **TYPE TRAITS**

PTAT **+1,62** UDC **+0,81** FLC **-0,32**

Stature	>	3,38
Stenght	>	1,75
Body Dept	>	1,94
Dairy Form	>	1,73
Rump Angle	>	0,35
Thurl Width	>	1,27
Rear Legs-Side	>	0,45
Rear Legs-Rear	>	0,96
Foot Angle	>	1,08
Feet & Legs Score	>	0,22
F. Udder Attachment	>	1,39
Rear Udder Height	>	1,11
Rear Udder Width	>	1,81
Udder Cleft	>	1,81
Udder Depth	>	1,73
Front Teat Placement	>	1,09
Rear Teat P. Rear	>	1,55
Teat Lenght	>	-0,41



GANDY INS

# MOONDANCE

IT020991130893 - 543HO00152 - aAa 234165

SEXED SEMEN *Made in Italy*  
**FOEMINA**  
Sexed **ULTRA**



**HOTROD**

Jerod x Iota

**MCCUTCHEN**

Gandy Ludmilla B+83

**PLANET**

Gandy Planet Lady Gaga B+81

**TPI**  
**+2376**

**NET MERIT \$**  
**+303**

**CHEESE MERIT \$**  
**+294**

► **PRODUCTION TRAITS** based on 1089 daughters in 333 herds (90% REL)

Milk	% Fat	Fat	% Protein	Protein
<b>+1947 lbs</b>	<b>-0,15</b>	<b>+30</b>	<b>-0,04</b>	<b>+49</b>
K Casein <b>AA</b>		Beta Lactoglobuline <b>BB</b>		Beta Casein <b>A2A2</b>

► **HEALTH TRAITS**

SCS	<b>+3,18</b>	SCE	<b>+2,20</b>
PL	<b>+0,10</b>	DCE	<b>+2,40</b>
DPR	<b>-2,40</b>	FI	<b>-1,40</b>

► **TYPE TRAITS**

PTAT **+1,58** UDC **+1,22** FLC **+0,13**

Stature	>	2,69
Stenght	>	0,83
Body Dept	>	1,15
Dairy Form	>	1,58
Rump Angle	>	1,53
Thurl Width	>	1,67
Rear Legs-Side	>	-0,55
Rear Legs-Rear	>	1,06
Foot Angle	>	1,09
Feet & Legs Score	>	0,56
F. Udder Attachment	>	1,88
Rear Udder Height	>	1,65
Rear Udder Width	>	2,23
Udder Cleft	>	1,54
Udder Depth	>	1,85
Front Teat Placement	>	1,72
Rear Teat P. Rear	>	1,74
Teat Lenght	>	-1,91





GANDY INS **MOONWALK**

IT020991130896 - 543HO00138 - aAa 423615



Portis Moonwalk Carolina

**HOTROD** × **MCCUTCHEN** × **PLANET**  
 Jerod x Iota × Gandy Ludmilla B+83 × Gandy Planet Lady Gaga B+81

**TPI** +2363    **NET MERIT \$** +315    **CHEESE MERIT \$** +313

► **PRODUCTION TRAITS** based on 139 daughters in 74 herds (89% REL)

Milk	% Fat	Fat	% Protein	Protein
<b>+1164 lbs</b>	<b>-0,1</b>	<b>+17</b>	<b>-0,01</b>	<b>+33</b>
K Casein <b>AA</b>		Beta Lactoglobuline <b>AB</b>		Beta Casein <b>A2A2</b>

► **HEALTH TRAITS**

SCS	<b>+3,02</b>	SCE	<b>+2,10</b>
PL	<b>+1,10</b>	DCE	<b>+2,20</b>
DPR	<b>-0,10</b>	FI	<b>+0,60</b>

► **TYPE TRAITS**

PTAT **+1,34**    UDC **+1,06**    FLC **+0,53**

Stature	>	2,20
Stenght	>	0,59
Body Dept	>	0,85
Dairy Form	>	0,91
Rump Angle	>	0,43
Thurl Width	>	0,76
Rear Legs-Side	>	-0,69
Rear Legs-Rear	>	1,55
Foot Angle	>	1,43
Feet & Legs Score	>	0,77
F. Udder Attachment	>	1,58
Rear Udder Height	>	1,20
Rear Udder Width	>	1,69
Udder Cleft	>	1,82
Udder Depth	>	1,61
Front Teat Placement	>	1,40
Rear Teat P. Rear	>	1,15
Teat Lenght	>	-1,11



GO-FARM **MUNARI**

IT019991671551 - 543HO00166 - aAa 234



Go-Farm Munari

**HOTLINE** × **DOZER** × **SNOWMASTER**  
 Hotrod x Mogul × Go-Farm Mestalla EX90 × Marci 7716 MB87

**TPI** +2586    **NET MERIT \$** +407    **CHEESE MERIT \$** +420

► **PRODUCTION TRAITS** based on 809 daughters in 231 herds (90% REL)

Milk	% Fat	Fat	% Protein	Protein
<b>+647 lbs</b>	<b>+0,11</b>	<b>+57</b>	<b>+0,08</b>	<b>+42</b>
K Casein <b>AA</b>		Beta Lactoglobuline <b>AB</b>		Beta Casein <b>A1A2</b>

► **HEALTH TRAITS**

SCS	<b>+2,98</b>	SCE	<b>+2,10</b>
PL	<b>-1,10</b>	DCE	<b>+2,30</b>
DPR	<b>-2,20</b>	FI	<b>-1,30</b>

► **TYPE TRAITS**

PTAT **+1,77**    UDC **+2,07**    FLC **+2,06**

Stature	>	0,85
Stenght	>	0,59
Body Dept	>	0,57
Dairy Form	>	0,84
Rump Angle	>	-0,53
Thurl Width	>	-0,07
Rear Legs-Side	>	-1,36
Rear Legs-Rear	>	3,05
Foot Angle	>	2,37
Feet & Legs Score	>	1,84
F. Udder Attachment	>	2,39
Rear Udder Height	>	2,90
Rear Udder Width	>	2,84
Udder Cleft	>	0,97
Udder Depth	>	1,36
Front Teat Placement	>	1,05
Rear Teat P. Rear	>	1,29
Teat Lenght	>	-1,19

R DG

# NEUTRON

NL000715951660 - 543HO00167 - aAa 231465



**CHARLEY** × **POWERBALL** × **NUMERO UNO**  
 Supershot x Mogul R DG Noa Tir-An N.U.Nyala MB86

<b>TPI</b> <b>+2529</b>	<b>NET MERIT \$</b> <b>+491</b>	<b>CHEESE MERIT \$</b> <b>+498</b>
----------------------------	------------------------------------	---------------------------------------

► **PRODUCTION TRAITS** based on 4112 daughters in 914 herds (90% REL)

Milk <b>+1724 lbs</b>	% Fat <b>-0,15</b>	Fat <b>+22</b>	% Protein <b>+0,01</b>	Protein <b>+58</b>
K Casein <b>BB</b>		Beta Lactoglobuline <b>AA</b>		Beta Casein <b>A2A2</b>

► **HEALTH TRAITS**

SCS	<b>+2,82</b>	SCE	<b>+1,80</b>
PL	<b>+2,10</b>	DCE	<b>+1,80</b>
DPR	<b>+0,50</b>	FI	<b>+0,80</b>



► **TYPE TRAITS**

PTAT **+1,10** UDC **+0,89** FLC **+0,21**

Stature	>	1,80
Stenght		-0,18
Body Dept		0,12
Dairy Form		1,34
Rump Angle		0,44
Thurl Width		1,36
Rear Legs-Side		1,08
Rear Legs-Rear		0,06
Foot Angle		0,32
Feet & Legs Score		0,78
F. Udder Attachment		1,19
Rear Udder Height		1,19
Rear Udder Width		1,27
Udder Cleft		1,41
Udder Depth		1,12
Front Teat Placement		1,24
Rear Teat P. Rear	>	1,57
Teat Lenght		0,21

DOTTI ENTERPRISE

# RAFFAELLO

IT036990627056 - 543HO00212 - aAa 231



**ENTERPRISE** × **SILVER** × **DOORMAN**  
 Penmanship x Balisto Dotti Silver Alessia MB88 Dotti Doorina MB86

<b>TPI</b> <b>+2370</b>	<b>NET MERIT \$</b> <b>+293</b>	<b>CHEESE MERIT \$</b> <b>+309</b>
----------------------------	------------------------------------	---------------------------------------

► **PRODUCTION TRAITS** based on 82 daughters in 44 herds (86% REL)

Milk <b>+81 lbs</b>	% Fat <b>+0,1</b>	Fat <b>+31</b>	% Protein <b>+0,08</b>	Protein <b>+25</b>
K Casein <b>BB</b>		Beta Lactoglobuline <b>AA</b>		Beta Casein <b>A2A2</b>

► **HEALTH TRAITS**

SCS	<b>+2,84</b>	SCE	<b>+2,20</b>
PL	<b>+1,10</b>	DCE	<b>+2,70</b>
DPR	<b>-1,40</b>	FI	<b>-1,10</b>



► **TYPE TRAITS**

PTAT **+1,57** UDC **+1,50** FLC **+0,88**

Stature	>	1,71
Stenght		0,28
Body Dept		0,85
Dairy Form		1,48
Rump Angle	>	1,76
Thurl Width		0,63
Rear Legs-Side		-0,45
Rear Legs-Rear		1,06
Foot Angle	>	1,60
Feet & Legs Score		1,19
F. Udder Attachment	>	1,67
Rear Udder Height	>	2,34
Rear Udder Width	>	1,79
Udder Cleft		1,27
Udder Depth	>	1,75
Front Teat Placement		0,75
Rear Teat P. Rear		0,94
Teat Lenght		0,73

New

DE VOLMER  
DG

# RUBESCO

NL000673947046 - 543H000208



**IMAX**

Spring x Mogul

**JEDI**

De Volmer Sabine

**KINGBOY**

Tramilda-N Kingboy  
Sage ET

**TPI**

**+2676**

**NET MERIT \$**

**+653**

**CHEESE MERIT \$**

**+658**

► **PRODUCTION TRAITS** based on 126 daughters in 53 herds (88% REL)

Milk	% Fat	Fat	% Protein	Protein
<b>+1870 lbs</b>	<b>-0,03</b>	<b>+63</b>	<b>+0,03</b>	<b>+67</b>
K Casein <b>AA</b>		Beta Lactoglobuline <b>AB</b>		Beta Casein <b>A2A2</b>

► **HEALTH TRAITS**

SCS	<b>+3,02</b>	SCE	<b>+1,90</b>
PL	<b>+2,50</b>	DCE	<b>+1,80</b>
DPR	<b>-3,00</b>	FI	<b>-1,90</b>

► **TYPE TRAITS**

PTAT **+1,48** UDC **+1,66** FLC **+0,14**

Stature	>	1,59
Stenght	>	1,45
Body Dept	>	0,92
Dairy Form	>	0,65
Rump Angle	>	-0,38
Thurl Width	>	1,84
Rear Legs-Side	>	-1,33
Rear Legs-Rear	>	0,75
Foot Angle	>	1,54
Feet & Legs Score	>	0,36
F. Udder Attachment	>	2,10
Rear Udder Height	>	2,04
Rear Udder Width	>	2,22
Udder Cleft	>	1,03
Udder Depth	>	1,98
Front Teat Placement	>	0,45
Rear Teat P. Rear	>	0,48
Teat Lenght	>	0,00

FANTASY  
ALLMEI

# SHARPE

IT001990871408 - 543HO00087 - aAa 234156

SEXED SEMEN *Made in Italy*  
**FOEMINA**  
Sexed **ULTRA 4M**



Fantasy Allmei Sharpe

**1STCLASS**

Numero Uno x Dorcy

**EPIC**

Sepia MB85

**HAYDEN**

Sabrin 192 MB85

**TPI**

**+2425**

**NET MERIT \$**

**+407**

**CHEESE MERIT \$**

**+405**

► **PRODUCTION TRAITS** based on 2710 daughters in 672 herds (90% REL)

Milk	% Fat	Fat	% Protein	Protein
<b>+1406 lbs</b>	<b>-0,05</b>	<b>+38</b>	<b>-0,03</b>	<b>+34</b>
K Casein <b>BE</b>		Beta Lactoglobuline <b>AA</b>		Beta Casein <b>A1A2</b>

► **HEALTH TRAITS**

SCS	<b>+2,87</b>	SCE	<b>+1,90</b>
PL	<b>+1,30</b>	DCE	<b>+3,20</b>
DPR	<b>-1,90</b>	FI	<b>-1,80</b>



Sharpe Drama EX91

► **TYPE TRAITS**

PTAT **+1,08** UDC **+2,07** FLC **+0,58**

Stature	>	0,72
Stenght	>	-0,84
Body Dept	>	-0,60
Dairy Form	>	0,85
Rump Angle	>	1,98
Thurl Width	>	-0,55
Rear Legs-Side	>	0,13
Rear Legs-Rear	>	0,68
Foot Angle	>	0,76
Feet & Legs Score	>	0,69
F. Udder Attachment	>	2,12
Rear Udder Height	>	2,93
Rear Udder Width	>	1,50
Udder Cleft	>	1,26
Udder Depth	>	2,38
Front Teat Placement	>	0,36
Rear Teat P. Rear	>	0,80
Teat Lenght	>	-0,08





**New**

ROYAL

# SIGILLO

IT004991947078 - 543HO00233

SEXED SEMEN *Made in Italy*  
**FOEMINA**  
Sexed **ULTRA 4M****PADAWAN**

Jedi x Enfrocer

**SUPERSTAR**

Zaqa MB85

**BOOKEL**

Scotta Uganda VG86

**TPI**  
**+2539****NET MERIT \$**  
**+568****CHEESE MERIT \$**  
**+581****► PRODUCTION TRAITS** based on 200 daughters in 92 herds (88% REL)

Milk	% Fat	Fat	% Protein	Protein
<b>+1192 lbs</b>	<b>-0,04</b>	<b>+33</b>	<b>+0,06</b>	<b>+56</b>
K Casein <b>BB</b>		Beta Lactoglobuline <b>AA</b>		Beta Casein <b>A2A2</b>

**► HEALTH TRAITS**

SCS	<b>+2,91</b>	SCE	<b>+2,10</b>
PL	<b>+3,10</b>	DCE	<b>+2,00</b>
DPR	<b>+1,50</b>	FI	<b>+1,90</b>

**► TYPE TRAITS**PTAT **+0,47** UDC **+0,49** FLC **-1,31**

Stature				<b>1,81</b>
Stenght				<b>0,29</b>
Body Dept				<b>0,24</b>
Dairy Form				<b>0,77</b>
Rump Angle				<b>1,56</b>
Thurl Width				<b>0,32</b>
Rear Legs-Side				<b>-0,12</b>
Rear Legs-Rear				<b>-1,27</b>
Foot Angle				<b>-0,60</b>
Feet & Legs Score				<b>-0,71</b>
F. Udder Attachment				<b>0,46</b>
Rear Udder Height				<b>0,83</b>
Rear Udder Width				<b>0,61</b>
Udder Cleft				<b>1,76</b>
Udder Depth				<b>1,06</b>
Front Teat Placement				<b>0,90</b>
Rear Teat P. Rear				<b>2,22</b>
Teat Lenght				<b>-0,49</b>

-0,5 0 +0,5 +1 +1,5

GO-FARM

# SORRENTO

IT019991728974 - 543HO00192 - aAa 324156

**HOTLINE**

Hotrod x Mogul

**BATTLECRY**

Go-Farm Smack GP82

**DOORMAN**

Go-Farm Sanwood VG86

**TPI**  
**+2624****NET MERIT \$**  
**+508****CHEESE MERIT \$**  
**+528****► PRODUCTION TRAITS** based on 124 daughters in 51 herds (87% REL)

Milk	% Fat	Fat	% Protein	Protein
<b>+533 lbs</b>	<b>+0,2</b>	<b>+78</b>	<b>+0,09</b>	<b>+41</b>
K Casein <b>AB</b>		Beta Lactoglobuline <b>AA</b>		Beta Casein <b>A2A2</b>

**► HEALTH TRAITS**

SCS	<b>+2,73</b>	SCE	<b>+2,00</b>
PL	<b>-0,50</b>	DCE	<b>+2,20</b>
DPR	<b>-2,40</b>	FI	<b>-1,80</b>

**► TYPE TRAITS**PTAT **+1,52** UDC **+1,53** FLC **+1,33**

Stature				<b>1,31</b>
Stenght				<b>0,04</b>
Body Dept				<b>0,72</b>
Dairy Form				<b>1,72</b>
Rump Angle				<b>-0,94</b>
Thurl Width				<b>0,64</b>
Rear Legs-Side				<b>-0,38</b>
Rear Legs-Rear				<b>2,03</b>
Foot Angle				<b>1,37</b>
Feet & Legs Score				<b>1,37</b>
F. Udder Attachment				<b>1,94</b>
Rear Udder Height				<b>1,71</b>
Rear Udder Width				<b>2,12</b>
Udder Cleft				<b>1,51</b>
Udder Depth				<b>1,39</b>
Front Teat Placement				<b>0,75</b>
Rear Teat P. Rear				<b>1,04</b>
Teat Lenght				<b>0,03</b>

-0,5 0 +0,5 +1 +1,5



# MIRABELL SOUND SYSTEM

IT017991512628 - 543HO00086 - aAa 234156



**SILVER** Mogul x Snowman × **SUPERSIRE** Mirabell Ssire Shana MB87 × **SHOTTLE** Mirabell Nizza EX90

**TPI** +2617    **NET MERIT \$** +548    **CHEESE MERIT \$** +552

► **PRODUCTION TRAITS** based on 7392 daughters in 1414 herds (94% REL)

Milk	% Fat	Fat	% Protein	Protein
<b>+1254 lbs</b>	<b>+0,11</b>	<b>+80</b>	<b>+0,02</b>	<b>+45</b>
K Casein <b>BE</b>		Beta Lactoglobuline <b>AA</b>		Beta Casein <b>A1A1</b>

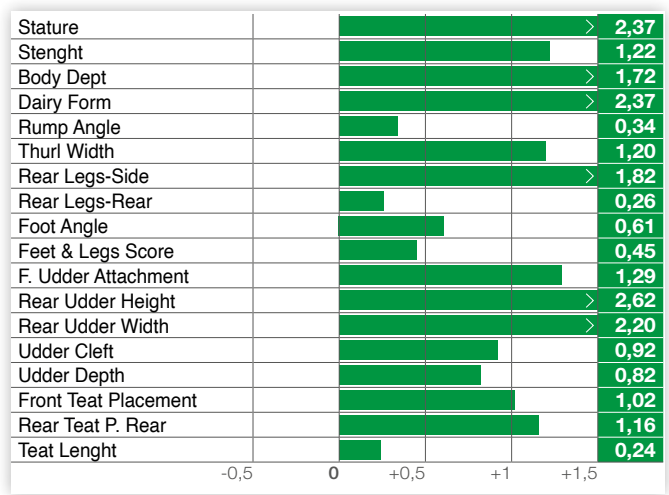
► **HEALTH TRAITS**

SCS	<b>+2,99</b>	SCE	<b>+3,00</b>
PL	<b>+0,90</b>	DCE	<b>+2,00</b>
DPR	<b>-1,60</b>	FI	<b>-1,00</b>



► **TYPE TRAITS**

PTAT	<b>+1,64</b>	UDC	<b>+1,23</b>	FLC	<b>-0,16</b>
------	--------------	-----	--------------	-----	--------------



# GARIONI ROYAL VANHALEN

IT019991363560 - 543HO00067 - aAa 324561



**MONTROSS** Mogul x Bolton × **MCCUTCHEEN** Sonray-Acres Mcthn B+84 × **OBSERVER** Sonray-Acres Soc Observr

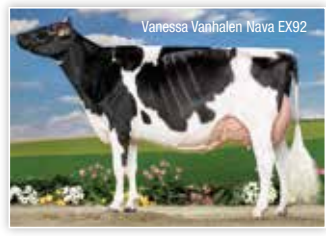
**TPI** +2473    **NET MERIT \$** +396    **CHEESE MERIT \$** +402

► **PRODUCTION TRAITS** based on 12792 daughters in 2226 herds (94% REL)

Milk	% Fat	Fat	% Protein	Protein
<b>+1049 lbs</b>	<b>+0,03</b>	<b>+49</b>	<b>+0,02</b>	<b>+39</b>
K Casein <b>AB</b>		Beta Lactoglobuline <b>AA</b>		Beta Casein <b>A2A2</b>

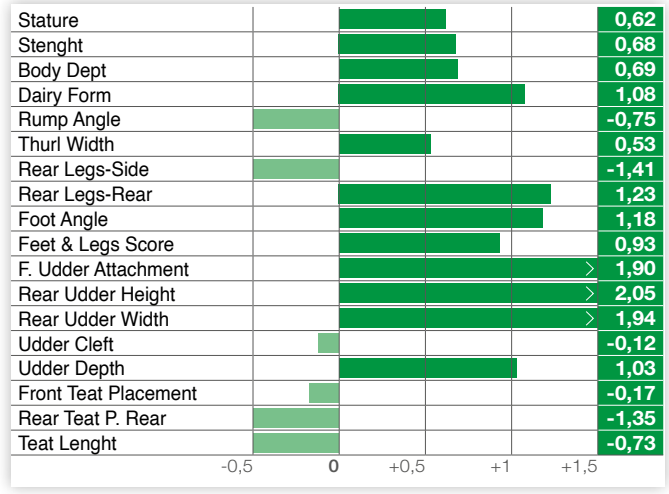
► **HEALTH TRAITS**

SCS	<b>+2,90</b>	SCE	<b>+1,90</b>
PL	<b>+1,20</b>	DCE	<b>+2,30</b>
DPR	<b>-1,80</b>	FI	<b>-1,40</b>



► **TYPE TRAITS**

PTAT	<b>+1,29</b>	UDC	<b>+1,28</b>	FLC	<b>+0,90</b>
------	--------------	-----	--------------	-----	--------------



# THE PERFECT PARTNERSHIP



## SexedULTRA 4M

continues to pass 90% gender accuracy allowing the farmer to feel confident in producing female progeny from the very best of the herd

## INSEME BEEF IMPACT

Maximise the value of every beef pregnancy by selecting our proven bulls that suit your farm system

Inseme's Beef Impact encompasses real on-farm data which is aimed at Dairy farmers wanting to select beef sires that will suit their system for Ease of Management and added Market Value. This maximises productivity and profitability of the dairy herd by allowing customers to identify proven quality bulls who are specialists for desired traits.



### LUCE WATER PARTY BOY

UK116863300075

			SIRE ATTRIBUT DU FOND DE BOIS	DAM BORTHERS KYRIE	MGS ANNANWATER VINCE
GESTATION LENGTH (GG)	LONGER	285	█	281	SHORTER
CALVING DIFFICULTY (%)	HARDER	5	█	3.2	EASIER
CALF VIGOUR (%)	-VIGOROUS	1	█	1.7	+VIGOROUS
CALF QUALITY (%)	POORER	80	█	91.5	EXCELLENT
BIRTH WEIGHT (KG)	LIGHTER	0	█	1.9	HEAVIER



### TWEMLOWS OFFICER

UK 305928/401634

			SIRE AMPERTAINE COMMANDER	DAM TWEMLOWS HUM	MGS -
GESTATION LENGTH (GG)	LONGER	285	█	284	SHORTER
CALVING DIFFICULTY (%)	HARDER	5	█	2.8	EASIER
CALF VIGOUR (%)	-VIGOROUS	1	█	1.2	+VIGOROUS
CALF QUALITY (%)	POORER	80	█	99	EXCELLENT
BIRTH WEIGHT (KG)	LIGHTER	0	█	-0.2	HEAVIER



# Ecofeed®

The largest evidence-based Feed Conversion Efficiency index in the world

The EcoFeed® program utilizes a measure of feed conversion efficiency known as residual feed intake (RFI). RFI is a measure that quantifies the variation in feed intake beyond that needed to support maintenance and performance requirements. RFI can be used in multi trait selection indexes to simultaneously improve both feed conversion efficiency and other economically relevant traits, as it is independent of body size and production. This makes RFI an ideal trait for the EcoFeed® index as we strive to create a future in which dairy cattle produce more outputs with fewer inputs, providing farmers with the economic and environmental sustainability necessary for long term success.

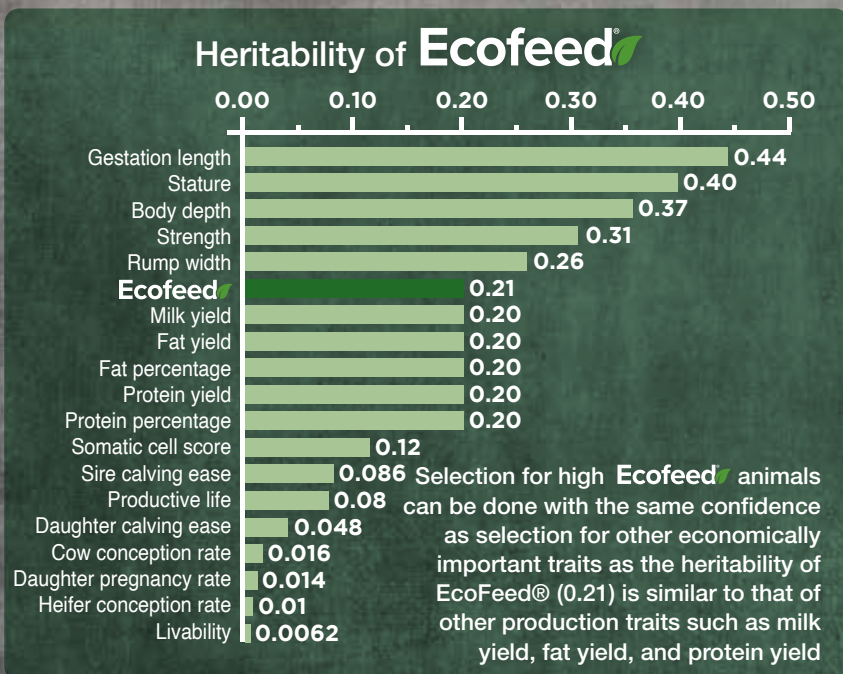


Bull name	Ecofeed® Cow
Moondance	124
Alcerosso	120
Saluzzo	120
Monzon	119
Wally Red P	119
Bellagio	111
Fabius	110
Indro	109
Nibali	105
Vale-T	105
Barone Rosso	104
Faletti	102
Diavolo Rosso	102
Emerito	102
Minardi	102

**15%**  
less feed  
consumed

**15%**  
less methane  
emissions

**21%**  
less water  
consumed



Bull name	Ecofeed® Heifer
Bramante	116
Alcerosso	111
Salieri	111
Brunelleschi	109
Stratos	108
Bellagio	107
Sigillo	107
Sonik	107
Faletti	106
Monzon	105
Avon	105
Kyrios	105
Telesforo	105
Sound System	105
Nocino	104



*italian style*

ediprima  
L'ESPRESSO

*April*  
2023

INSEME

